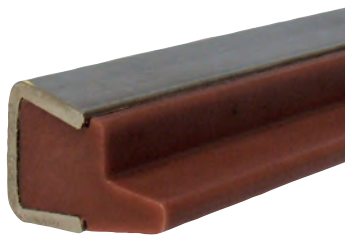
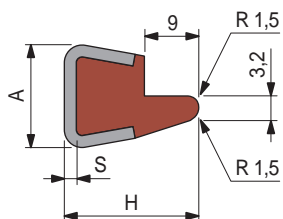


Part. S0308



Neck transport guide



S	H	A
mm	mm	mm
1,5	22,5	16
2	23	17

Thickness S	Metal profile material	Length metres	Code	Weight kg/m
Plastic profile in polyethylene UHMWPE (white)				
1,5	Austenitic stainless steel	3	65602	0,65
		6	68192	
2		3	67713	
Plastic profile in polyethylene ULF (brown red)				
2	Austenitic stainless steel	3	UL646883	0,65

- Antistatic polyethylene UHMWPE (black) available upon request with minimum quantities.
- Min. curvature radius: 160 mm.
- Linear expansion coefficient: $4 \times 10^{-5} \text{ }^\circ\text{C}^{-1}$.
- Calculation of thermal expansion see Technical information.
- Packaging: 24 metres (in 3 m length 10Ft).
48 metres (in 6 m length).
- Accessories:



Guide - Rail Clamps.



Guide rail bending machine (manual)
Part. S0218.

• **Material:** Polyethylene UHMWPE with molecular density 5.600.000 g/mol.

• **Characteristics:** new material Polyethylene ULF brown red (UHMWPE): reduced friction coefficient, higher wear resistance.

• **Operating temperature White, Green, Black:**

In air (- 40 to + 80 °C).

In hot water (+ 70 °C).

• **Operating temperature ULF - brown red:**

In air (- 40 to + 45 °C).

In hot water (+ 45 °C).

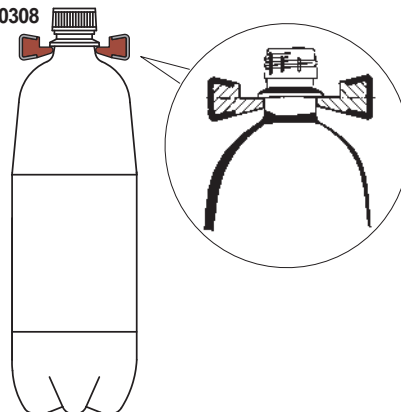
• **Polyethylene ULF is FDA approved**

Polyethylene ULF complies with the Code of Federal Regulations Title 21, § 177.1520 "Olefin Polymers" of the Food and Drug Administration (FDA) of April 1, 2008.

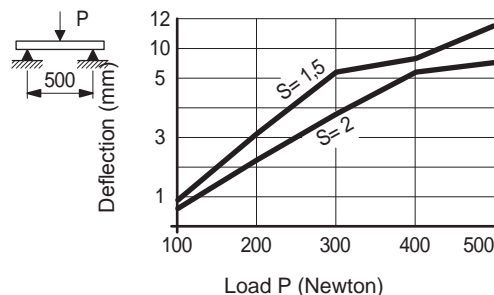
• **Use of Part. S0308**

Overhead trasport of PET bottles.

Part./Art.
Réf. **S0308**



• **Deflection of Part. S0308 - S0393 - S0596**



● Best Seller

● Standard

● On request: minimum quantity may apply. Consult our Customer Service for availability.

Item code for order = Part. + Code