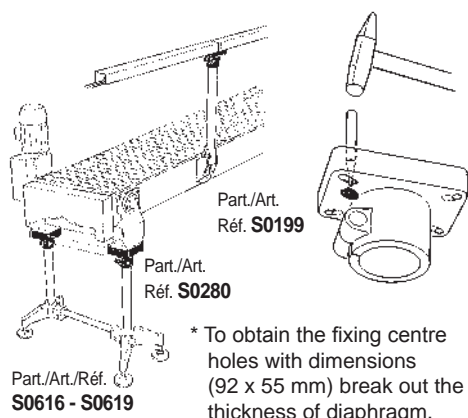
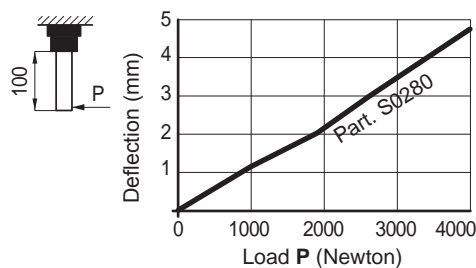


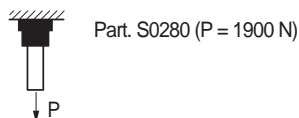
#### • Assembly of Part. S0280



#### • Deflection of Part. S0280

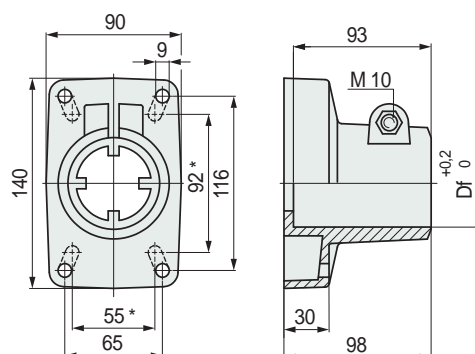


#### • Sliding load



Tests performed at tightening torque:  
- 3,5 Kgm (for Part. S0280)

#### ■ Bearing head



Tube dimensions mm	Bore Df mm	Code
Ø 48,3 (1 1/2")	48,3	<b>63503</b>
Ø 50,8	50,8	<b>664781</b>
Ø 60,3 (2")	60,3	<b>66781</b>

- Material: head in reinforced polyamide PA FV (black).
- Bolts material: austenitic stainless steel.
- Weight: 0,40 Kg.
- Max recommended tightening torque: 3,5 Kgm.
- Packaging: 8 pieces.

Part. **S0280**



For round tubes

● Best Seller

● Standard

● On request: minimum quantity may apply. Consult our Customer Service for availability.

Item code for order = Part. + Code