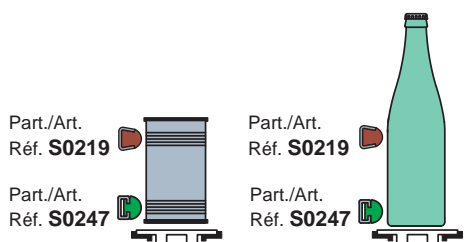
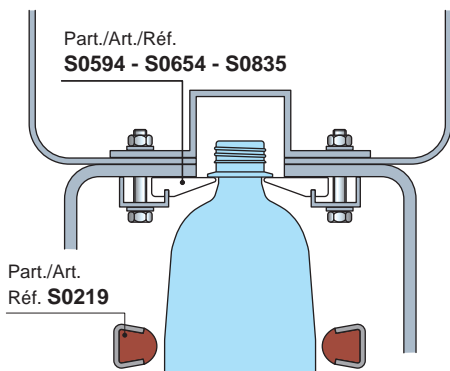


- **Material:** Polyethylene UHMWPE with molecular density 5.600.000 g/mol.
Characteristics: new material Polyethylene ULF brown red (UHMWPE): reduced friction coefficient, higher wear resistance.
- **Operating temperature White, Green, Black:**
In air (- 40 to + 80 °C).
In hot water (+ 70 °C).
- **Operating temperature ULF - brown red:**
In air (- 40 to + 45 °C).
In hot water (+ 45 °C).
- **Polyethylene ULF is FDA approved**
Polyethylene ULF complies with the Code of Federal Regulations Title 21, § 177.1520 "Olefin Polymers" of the Food and Drug Administration (FDA) of April 1, 2008.

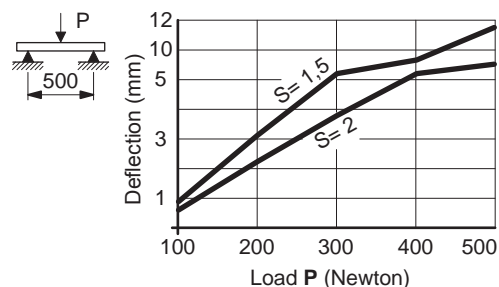
- **Use of S0219 - S0247**
Medium strength containers (ex: latten, glass).



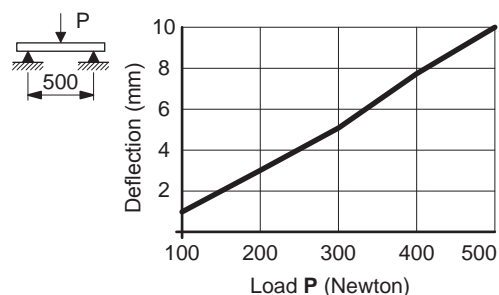
Plastic profile of Part. S0247 can be disassembled.



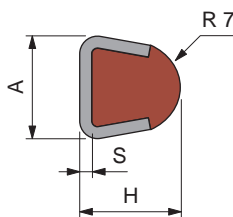
- **Deflection of Part. S0219**



- **Deflection of Part. S0247**



Guide rail (round)



S	H	A
mm	mm	mm
1,5	17,5	16
2	18	17

Thickness S mm	Metal profile material	Length metres	Code	Weight kg/m
----------------	------------------------	---------------	------	-------------

Plastic profile in polyethylene UHMWPE (white)				
1,5	Austenitic stainless steel	3	60161	0,54
	Zinc plated steel	6	69292	
2	Austenitic stainless steel	3	61753	0,54
	Zinc plated steel	6	67113	

Plastic profile in polyethylene ULF (brown red)				
1,5	Austenitic stainless steel	3	UL634643N	0,54
2	Zinc plated steel	3	UL634543N	

- Antistatic polyethylene UHMWPE (black) available upon request with minimum quantities.
- Min. curvature radius: 145 mm.
- Linear expansion coefficient: $4 \times 10^{-5} \text{ } ^\circ\text{C}^{-1}$.
Calculation of thermal expansion see Technical information.
- Packaging: 24 metres (in 3 m length 10Ft).
48 metres (in 6 m length).
- Accessories:

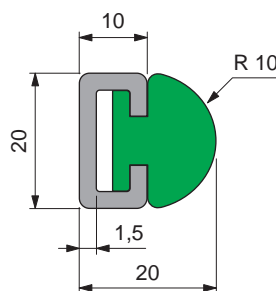


Guide - Rail Clamps.



Guide rail bending machine (manual)
Part. S0218.

Guide rail (round)



Length metres	Metal profile material	Code	Weight kg/m
---------------	------------------------	------	-------------

Plastic profile material in polyethylene UHMWPE (green)			
3	Austenitic stainless steel	63911	0,67
	Zinc plated steel	63921	

Plastic profile material in polyethylene UHMWPE (black)			
3	Zinc plated steel	684232	0,67
6	Zinc plated steel	689712	

- Min. curvature radius: 145 mm.
- Linear expansion coefficient: $2 \times 10^{-4} \text{ } ^\circ\text{C}^{-1}$.
Calculation of thermal expansion see Technical information.
- Packaging: 24 metres.
- Accessories:

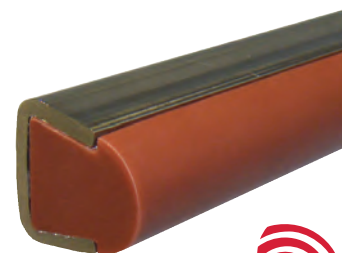


Guide - Rail Clamps.



Guide rail bending machine (manual)
Part. S0218.

Part. S0219



Part. S0247



● **Best Seller**

● **Standard**

● **On request:** minimum quantity may apply. Consult our Customer Service for availability.

Item code for order = Part. + Code