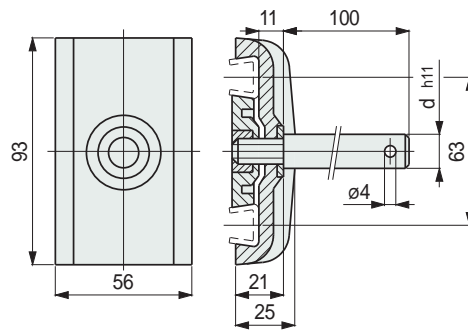


Part. S0213



Double guide rail clamp



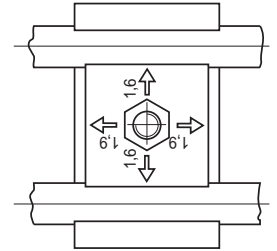
Pin dia. d mm	Code	Weight kg
12	60091	0,19
14	60181	0,22
16	60191	0,25

- Material: guide rail clamp in reinforced polyamide PA FV (black).
- Pin in austenitic stainless steel.
- Washer in austenitic stainless steel.
- Nut in nickel plated brass.
- Packaging: 50 pieces.

Assembly of Part. S0213

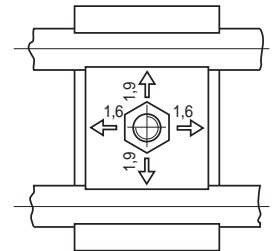
The plate inside the clamp must be positioned to suit the thickness of the guide.

Position of plate for assembly of guides of thickness $s = 1,5$.



Position of plate for assembly of guides of thickness $s = 2$.

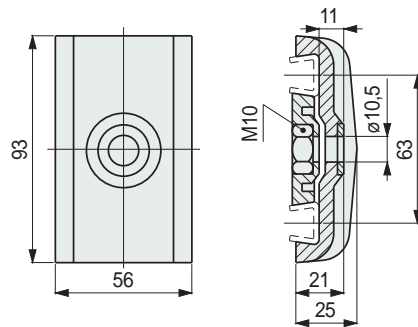
The plate is turned through 90°.



Part. S0213



Double guide rail clamp



Code	Weight kg
60101	0,08

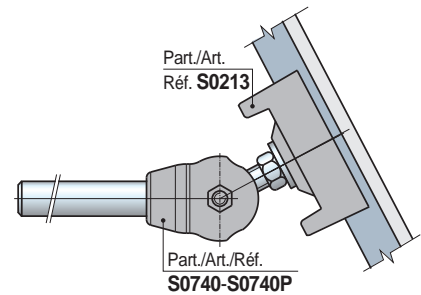
- Material: guide rail clamp in reinforced polyamide PA FV (black).
- Washer in austenitic stainless steel.
- Nut in nickel plated brass.
- Packaging: 50 pieces.
- Accessories: swivel pin connection Part. S0749 - S0740P.

Swivel pin connection Part. S0740 - S0740P

Use for conveyors with (format change).

They avoid an easy regulation of product-guides on corner tracks.

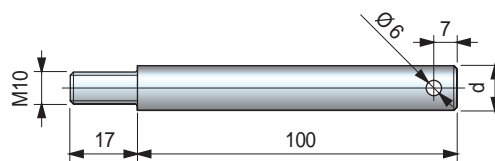
See page S112.



Part. S0000



Rod for Part. S0213



Pin dia. d mm	Code	Weight kg
12	65794	0,11
14	66004	0,14
16	66654	0,18

- Material: austenitic stainless steel.
- Packaging: 50 pieces.

Best Seller

Standard

On request: minimum quantity may apply. Consult our Customer Service for availability.

Item code for order = Part. + Code