

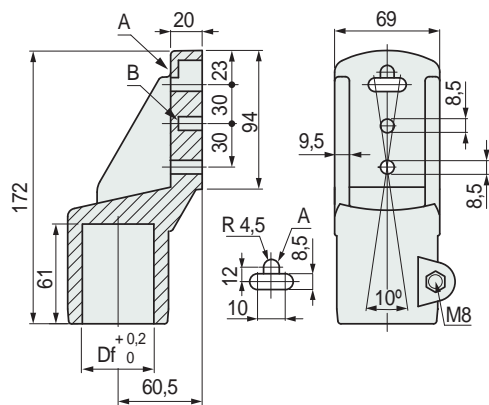
# Part. S0199



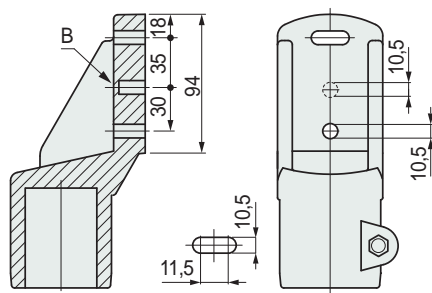
For round and square tubes

## Side mounting top bracket

Version with fixing holes for M8



Version with fixing holes for M10



Tube dimensions mm	Bore Df mm	Bolts material	Code
-----------------------	---------------	----------------	------

### Version with fixing holes for M8

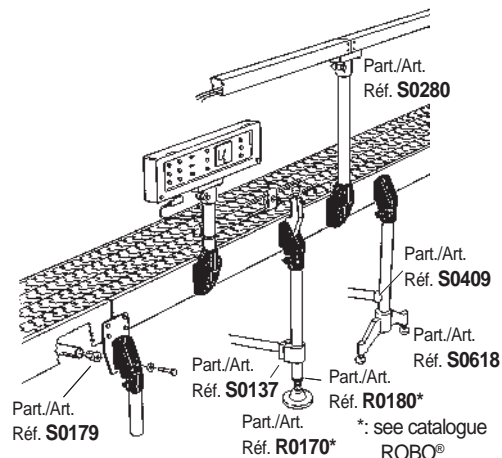
Ø 48,3 (1 1/2)	Ø 48,3	Austenitic stainless steel	59171
Ø 50,8	Ø 50,8	Austenitic stainless steel	664771
∅ 38x38	∅ 38	Austenitic stainless steel	611622
		Zinc plated steel	611712
∅ 40x40	∅ 40	Austenitic stainless steel	611632
		Zinc plated steel	611722

### Version with fixing holes for M10

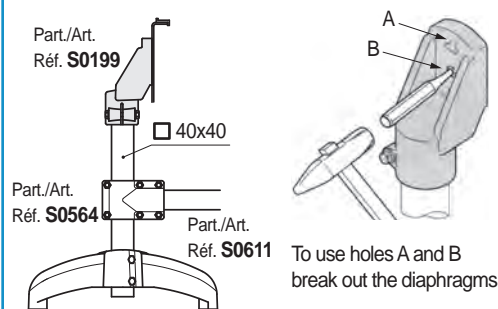
Ø 48,3 (1 1/2)	Ø 48,3	Austenitic stainless steel	61683
----------------	--------	----------------------------	-------

- Material: reinforced polyamide PA FV (black).
- Weight: 0,32 Kg.
- Max recommended tightening torque: 2 Kgm.
- Packaging: 24 pieces.

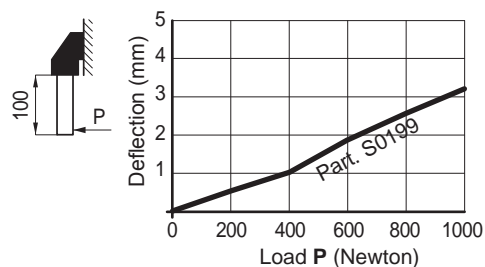
## Assembly of Part. S0199 (with round tubes)



## Assembly of Part. S0199 (with square tubes)



## Deflection of Part. S0199



## Sliding load



Part. S0199- Ø 48,3 (P = 3600 N)  
Part. S0199- ∅ 38 (P = 2600 N)  
Part. S0199- ∅ 40 (P = 1900 N)

## Breaking load



Part. S0199 (P = 35900 N)

Tests performed at tightening torque: 2 Kgm

● Best Seller

● Standard

● On request: minimum quantity may apply. Consult our Customer Service for availability.

Item code for order = Part. + Code