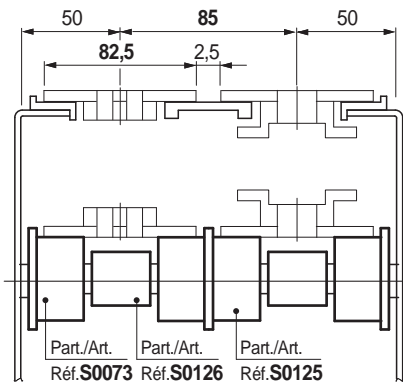
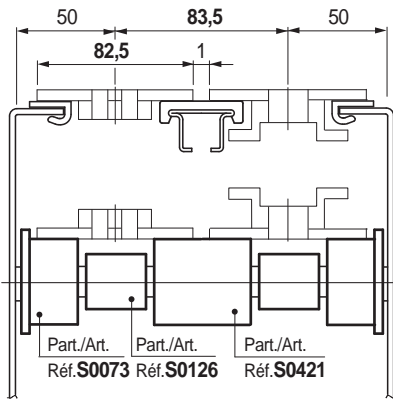


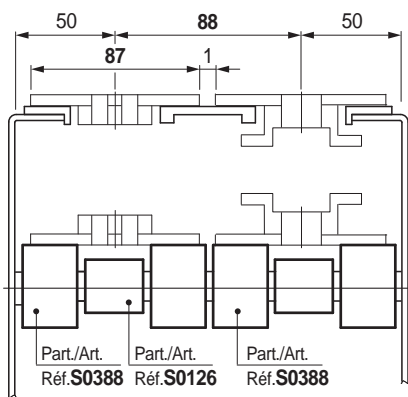
Chain width 82,5 mm (K 325) / Pitch 85 mm



Chain width 82,5 mm (K 325) / Pitch 83,5 mm

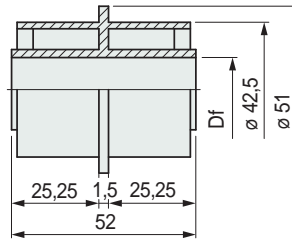


Chain width 87 mm (K 343) / Pitch 88 mm



Multi strand conveyors, with 82,5 mm width chains and pitch 88 mm, can be modified to convey PET bottles with pethal bottom or other unstable products.
Change chains from 82,5 mm to 87 mm width and wear strips, in this way the Gap between chains is reduced from 5,5 mm to 1 mm while the conveyor frame is unchanged.

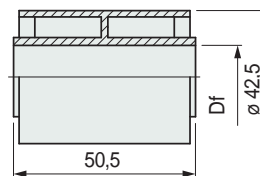
Double roller L52



Shaft dia. mm	Bore dia. Df mm	Code
12	12,5	63898
16	16,5	63908
18	18,5	63918
20	20,5	68873

- Material: polyethylene PE (black).
- Packaging: 100 pieces.

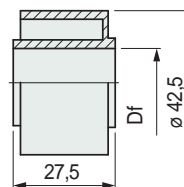
Roller



Shaft dia. mm	Bore dia. Df mm	Code
12	12,5	63858
16	16,5	63868
18	18,5	63878
20	20,5	63888

- Material: polyethylene PE (black).
- Packaging: 100 pieces.

Roller



Shaft dia. mm	Bore dia. Df mm	Code
12	12,5	66116
16	16,5	66126
18	18,5	66136
20	20,5	66146

- Material: polyethylene PE (black).
- Packaging: 100 pieces.

Part. S0125



Dia. 42,5 mm

Part. S0421



Dia. 42,5 mm

Part. S0388



Dia. 42,5 mm

● Best Seller

● Standard

● On request: minimum quantity may apply. Consult our Customer Service for availability.

Item code for order = Part. + Code