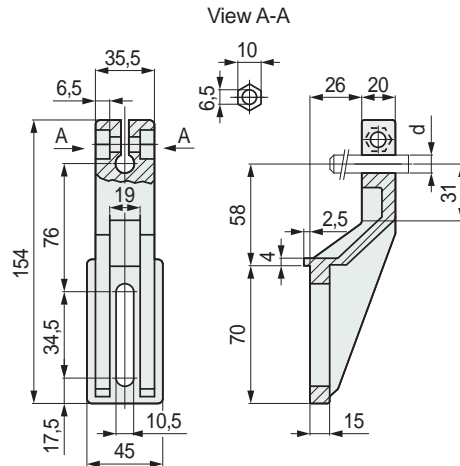


# Part. S0081



## Bracket



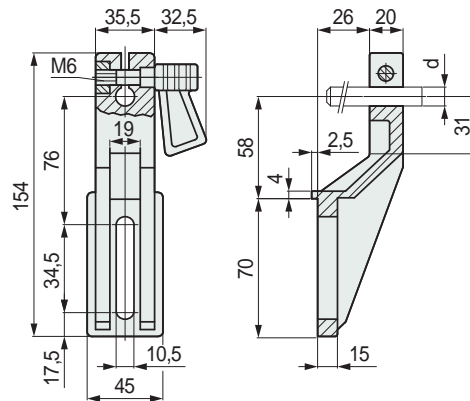
Material	Pin dia. d mm	Code	Weight kg
Polyamide PA (black)	12	50770	0,11
	14	50780	

- Standard packaging: supplied without tightening bolt.
- Tightening bolt required: bolt M6 x 25 UNI 5931, DIN 912. Nut M6 UNI 5587-68.
- Max recommended tightening torque: 0,6 Kgm.
- Packaging: 50 pieces.

# Part. S0088



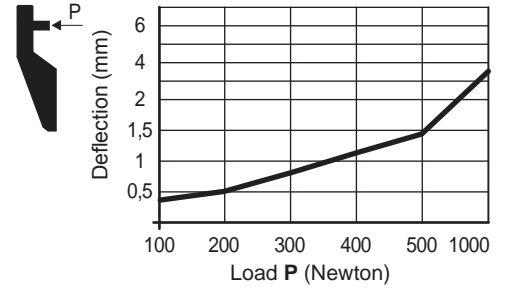
## Bracket with ratchet handle clamping



Material	Pin dia. d mm	Code	Weight kg
Polyamide PA (black)	12	50730	0,15
	14	50740	

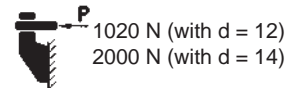
- Ratchet lever material: grip in acetal POM (black), threaded shank in austenitic stainless steel, fixing nut in nickel plated brass.
- Max recommended tightening torque: 0,6 Kgm.
- Packaging: 50 pieces.

## Deflection of Part. S0081 - S0088



## Technical data Part. S0081 - S0088

- Sliding load resistance:



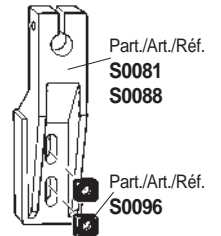
- Breaking load:



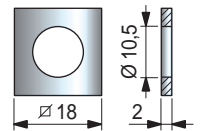
Tests performed at tightening torque: 0,6 Kgm

## Accessories

Square washer Part. S0096.  
Applicable to Part. S0081 - S0088 distributes force from tightening over larger area.

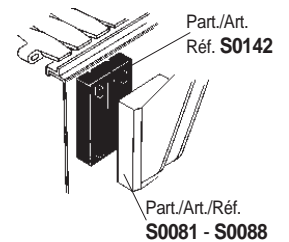


Square washer Part. S009651550.  
Material: austenitic stainless steel.  
Packaging: 200 pieces.



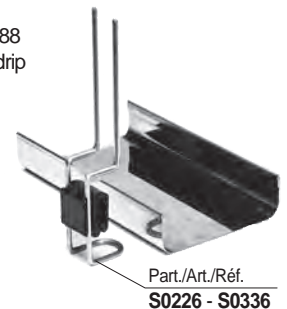
## Accessories

Spacer Part. S0142,  
Applicable to  
Part. S0081 - S0088.



## Assembly of drip tray support

Part. S0226 - S0336.  
Part. S0081 and S0088  
permit application of drip  
tray support.



● Best Seller

● Standard

● On request: minimum quantity may apply. Consult our Customer Service for availability.

Item code for order = Part. + Code