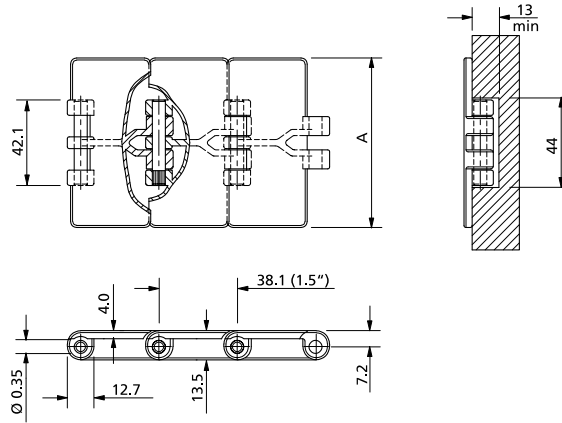


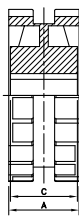
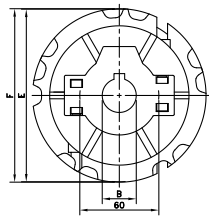
# Straight Run Single Hinge



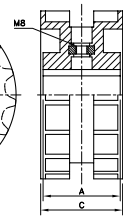
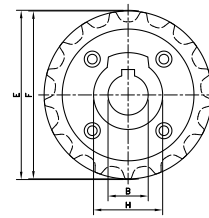
Chain Type	Code Number	Plate Width		Weight	Working Load (max.)	Backflex Radius (min)	Plate Thickness
		A					
		mm	inch	kg/m	N (21°C)	mm	mm
<b>XL-Acetal</b>							
SH 250 XL	750.42.22	63.5	2.50	0.69	1230	50	4.0
SH 325 XL	750.42.31	82.5	3.25	0.82			
SH 84 XL	750.42.35	83.8	3.30	0.82			
SH 350 XL	750.42.32	88.9	3.50	0.87			
SH 400 XL	750.42.40	101.6	4.00	0.95			
SH 450 XL	750.42.42	114.3	4.50	1.00			
SH 600 XL	750.42.60	152.4	6.00	1.20			
SH 750 XL	750.42.72	190.5	7.50	1.44			
<b>LF-Acetal</b>							
LF 820-K250	L0820667731	63.5	2.50	0.73	1230	50	4.0
LF 820-K325	L0820603761	82.5	3.25	0.83			
LF 820-K325 plastic pin*	L0820613711	82.5	3.25	0.63	1200		
LF 820-K343	L0820666361	87.0	3.43	0.85	1230		
LF 820-K350	L0820603771	88.9	3.50	0.87			
LF 820-K400	L0820603781	101.6	4.00	0.95			
LF 820-K450	L0820603791	114.3	4.50	1.03			
LF 820-K450 plastic pin*	L0820645211	114.3	4.50	0.83	1200		
LF 820-K600	L0820603801	152.4	6.00	1.25	1230		
LF 820-K750	L0820603811	190.5	7.50	1.47			
<b>HP-Acetal</b>							
HP 820-K325	L0820613041	82.5	3.25	0.83	1230	50	4.0
HP 820-K343	L0820670561	87.0	3.43	0.85			
HP 820-K350	L0820669071	88.9	3.50	0.87			
HP 820-K400	L0820649231	101.6	4.00	0.95			
HP 820-K450	L0820613051	114.3	4.50	1.03			
HP 820-K600	L0820613061	152.4	6.00	1.25			
HP 820-K750	L0820613071	190.5	7.50	1.47			
<b>PSX Advanced Performance Polymer Alloy</b>							
PSX 820-K325	L0820655383	82.5	3.25	0.82	1230	50	4.0
<b>BWX-Polyamide Composite</b>							
BWX 820-K325	L0820651513	82.5	3.25	0.83	1230	50	4.0
BWX 820-K450	L0820648833	114.3	4.50	1.03			
BWX 820-K600	L0820653043	152.4	6.00	1.25			
BWX 820-K750	L0820651713	190.5	7.50	1.47			

\* Pins made of black reinforced polyamide for non-magnetic or chemical applications. Ask customer service for minimum order quantity. Standard length: 3.048 m - 10 feet (80 links).

**NS 820**



**N 820**



Sprocket Type	Code Number	Number of Teeth	Bore	Pitch Diameter	Outside Diameter	Width (Teeth)	Hub Width	Hub Diameter
			B mm/inch	E mm	F mm	C mm	A mm	H mm
<b>Split Sprockets, Injection Moulded - NS 820</b>								
<b>Metric Bores</b>								
NS820 21-25	L0820664341	21	25	129.3	129.5	52.0	51.0	60
NS820 21-30	L0820664351	21	30	129.3	129.5	52.0	51.0	
NS820 21-35	L0820664361	21	35	129.3	129.5	52.0	51.0	
NS820 21-40	L0820664371	21	40	129.3	129.5	52.0	51.0	
NS820 21-45	L0820664381	21	45	129.3	129.5	52.0	51.0	
NS820 23-25	L0820662531	23	25	141.2	142.0	52.0	51.0	
NS820 23-30	L0820662541	23	30	141.2	142.0	52.0	51.0	
NS820 23-35	L0820662551	23	35	141.2	142.0	52.0	51.0	
NS820 23-40	L0820662561	23	40	141.2	142.0	52.0	51.0	
NS820 23-45	L0820662571	23	45	141.2	142.0	52.0	51.0	
NS820 25-25	L0820665361	25	25	153.2	154.2	54.0	58.5	
NS820 25-30	L0820665371	25	30	153.2	154.2	54.0	58.5	
NS820 25-35	L0820665381	25	35	153.2	154.2	54.0	58.5	
NS820 25-40	L0820665391	25	40	153.2	154.2	54.0	58.5	
NS820 25-45	L0820665401	25	45	153.2	154.2	54.0	58.5	
<b>Inch Bores*</b>								
NS820 21-1	L0820664391	21	1.00"	129.3	129.5	52.0	51.0	60
NS820 21-1¼	L0820664411	21	1.25"	129.3	129.5	52.0	51.0	
NS820 23-1	L0820662741	23	1.00"	141.2	142.0	52.0	51.0	
NS820 23-1¼	L0820662761	23	1.25"	141.2	142.0	52.0	51.0	
NS820 25-1	L0820665611	25	1.00"	153.2	154.2	54.0	58.5	
NS820 25-1¼	L0820665631	25	1.25"	153.2	154.2	54.0	58.5	

**For steel chain series (optional):** Rexnord: 812 (except TAB and mini hinge), 815.

**MCC:** single hinge straight run, single hinge Magnetflex.

**For plastic chain series:** 820, SH; Note: not suitable for 831 and SHD.

\* Ask Customer service for minimum order quantity of sprockets with inch bores.

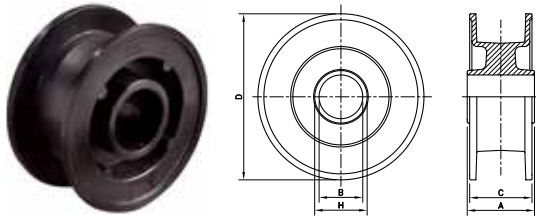
<b>Classic Sprockets, Injection Moulded - N 820</b>								
<b>Metric Bores</b>								
N820 15-25	L0820661451	15	25	93.7	92.2	50.0	50.0	43
N820 15-30	L0820661461	15	30	93.7	92.2	50.0	50.0	43
N820 17-25	L0820661681	17	25	105.5	104.7	51.0	48.0	43
N820 17-30	L0820661691	17	30	105.5	104.7	51.0	48.0	43
N820 19-20	L0820661911	19	20	117.4	117.1	50.0	50.0	60
N820 19-25	L0820661921	19	25	117.4	117.1	50.0	50.0	60
N820 19-30	L0820661931	19	30	117.4	117.1	50.0	50.0	60
N820 19-35	L0820661961	19	35	117.4	117.1	50.0	50.0	60
N820 19-40	L0820661941	19	40	117.4	117.1	50.0	50.0	60

**For steel chain series (optional):** Rexnord: 812 (except TAB and mini hinge), 815.

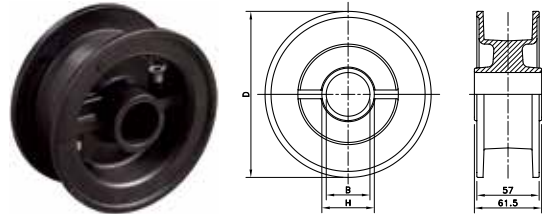
**MCC:** single hinge straight run, single hinge Magnetflex.

**For plastic chain series:** 820, SH; Note: not suitable for 831 and SHD.

## NXT 820



## NSXT 820



Sprocket Type	Code Number	Number of Teeth	Bore	Pitch Diameter	Outside Diameter	Width (Teeth)	Hub Width	Hub Diameter
			B	E	F	C	A	H
			mm/inch	mm	mm	mm	mm	mm

### Classic Idler Drums, Injection Moulded - NXT 820

Metric Bores								
NXT820 15-25	L0820662461	15	25	--	95.5	55.0	92.0	40
NXT820 15-30	L0820662471	15	30	--	95.5	55.0	92.0	40
NXT820 17-25	L0820661701	17	25	--	106.5	53.0	57.0	42
NXT820 17-30	L0820661711	17	30	--	106.5	53.0	57.0	42
NXT820 18-25	L0820661801	18	25	--	113.0	57.0	92.0	40
NXT820 18-30	L0820661811	18	30	--	113.0	57.0	92.0	40
NXT820 19-25	L0820661471	19	25	--	118.0	57.0	57.0	42
NXT820 19-30	L0820661481	19	30	--	118.0	57.0	57.0	42
NXT820 19-40	L0820661491	19	40	--	118.0	57.0	57.0	51
NXT820 21-25	L0820662091	21	25	--	130.0	60.0	61.5	35
NXT820 21-30	L0820662101	21	30	--	130.0	60.0	61.5	40
NXT820 21-35	L0820662121	21	35	--	130.0	60.0	61.5	45
NXT820 21-40	L0820662111	21	40	--	130.0	60.0	61.5	50
NXT820 23-25	L0820661821	23	25	--	142.5	59.5	61.5	35
NXT820 23-30	L0820661831	23	30	--	142.5	59.5	61.5	40
NXT820 23-35	L0820661861	23	35	--	142.5	59.5	61.5	45
NXT820 23-40	L0820661841	23	40	--	142.5	59.5	61.5	50
NXT820 25-25	L0820661721	25	25	--	154.5	59.0	61.5	35
NXT820 25-30	L0820661731	25	30	--	154.5	59.0	61.5	40
NXT820 25-35	L0820661741	25	35	--	154.5	59.0	61.5	45
NXT820 25-40	L0820661751	25	40	--	154.5	59.0	61.5	50
Inch Bores								
NXT820 21-1	L0820619132	21	1.00"	--	130.0	60.0	61.5	35
NXT820 21-1¼	L0820688801	21	1.25"	--	130.0	60.0	61.5	40
NXT820 21-1½	L0820688811	21	1.50"	--	130.0	60.0	61.5	45
NXT820 23-1¼	L0820661891	23	1.25"	--	142.5	59.5	61.5	40
NXT820 23-1½	L0820661881	23	1.50"	--	142.5	59.5	61.5	45
NXT820 25-1	L0820619142	25	1.00"	--	154.5	59.0	61.5	35
NXT820 25-1¼	L0820661761	25	1.25"	--	154.5	59.0	61.5	40
NXT820 25-1½	L0820661771	25	1.50"	--	154.5	59.0	61.5	45

For steel chain series: **Rexnord**: 812 (except TAB and mini hinge), 815, 881 (except TAB), 8811 (except TAB).

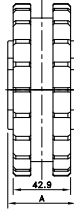
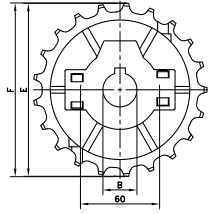
**MCC**: single hinge straight run, single hinge Magnetflex.

For plastic chain series: 879-Bevel, 880-Bevel, 820, 831, SH, SHD, RHM, RHMD, RHMP, RHMDP, SHP.

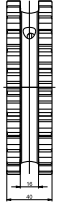
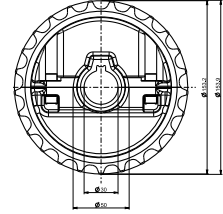
### Split Idler Drums, Injection Moulded - NSXT 820

Metric Bores								
NSXT 820 21-25	L0820665821	21	25	--	130.0	57.0	61.5	40
NSXT 820 21-30	L0820664861	21	30	--	130.0	57.0	61.5	40
NSXT 820 21-35	L0820664881	21	35	--	130.0	57.0	61.5	50
NSXT 820 21-40	L0820665841	21	40	--	130.0	57.0	61.5	50
NSXT 820 23-25	L0820665861	23	25	--	142.5	57.0	61.5	40
NSXT 820 23-30	L0820665881	23	30	--	142.5	57.0	61.5	40
NSXT 820 23-35	L0820665901	23	35	--	142.5	57.0	61.5	50
NSXT 820 23-40	L0820665921	23	40	--	142.5	57.0	61.5	50
NSXT 820 25-25	L0820665591N	25	25	--	154.5	57.0	61.5	35
NSXT 820 25-30	L0820665941N	25	30	--	154.5	57.0	61.5	40
NSXT 820 25-35	L0820665961N	25	35	--	154.5	57.0	61.5	45
NSXT 820 25-40	L0820664901N	25	40	--	154.5	57.0	61.5	50
NSXT 820 25-45	L0820697961N	25	45	--	154.5	57.0	61.5	50

## NS 831



## NSH 820/831



Sprocket Type	Code Number	Number of Teeth	Bore	Pitch Diameter	Outside Diameter	Width (Teeth)	Hub Width	Hub Diameter
			B	E	F	C	A	
			mm/inch	mm	mm	mm	mm	mm

### Split Sprockets, Injection Moulded - NS 831

Metric Bores								
NS831 21-25	L0831604102	21	25	129.3	129.5	42.9	51.0	60
NS831 21-30	L0831604112	21	30					
NS831 21-35	L0831604122	21	35					
NS831 21-40	L0831604132	21	40					
NS831 21-45	L0831604142	21	45					
NS831 23-25	L0831604152	23	25	141.2	142.0	42.9	51.0	60
NS831 23-30	L0831604162	23	30					
NS831 23-35	L0831604172	23	35					
NS831 23-40	L0831604182	23	40					
NS831 23-45	L0831604192	23	45					
NS831 25-25	L0831604202	25	25	153.2	154.2	42.9	58.5	60
NS831 25-30	L0831604212	25	30					
NS831 25-35	L0831604222	25	35					
NS831 25-40	L0831604232	25	40					
NS831 25-45	L0831604242	25	45					
Inch Bores								
NS831 21-1	L0831604252	21	1.000"	129.26	129.5	42.9	51.0	60
NS831 25-1	L0831604312	25	1.000"	153.21	154.2	42.9	58.5	

For plastic chain series: 820, 831, SH, SHD

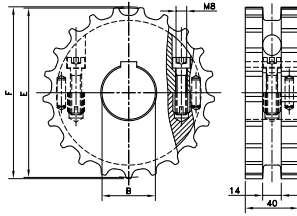
\* Ask Customer service for minimum order quantity of sprockets with inch bores.

### Split Sprockets, Injection Moulded - NSH 820/831

Metric Bores								
NSH820/831 25-25	L0820641083	25	25	153,2	154,2	42,9	40	60
NSH820/831 25-30	L0820641093	25	30					
NSH820/831 25-35	L0820641103	25	35					
NSH820/831 25-40	L0820641113	25	40					
NSH820/831 25-45	L0820641123	25	45					

For plastic chain series: 820, 831, SH, SHD.

# SS SH



Sprocket Type	Code Number	Number of Teeth	Bore	Pitch Diameter	Outside Diameter	Width (Teeth)	Hub Width	Hub Diameter
			B	E	F	C	A	H
			mm/inch	mm	mm	mm	mm	mm

## Split Sprockets, Machined - SS SH

Metric Bores								
SS SH 17-25	754.62.11	17	25	105.5	104.5	40	40	--
SS SH 17-30	754.62.21	17	30					
SS SH 17-35	754.62.31	17	35					
SS SH 17-40	754.62.41	17	40					
SS SH 19-25	754.62.12	19	25	117.3	116.3			
SS SH 19-30	754.62.22	19	30					
SS SH 19-35	754.62.32	19	35					
SS SH 19-40	754.62.42	19	40					
SS SH 19-50	754.62.62	19	50	129.3	130.0			
SS SH 21-25	754.62.13	21	25					
SS SH 21-30	754.62.23	21	30					
SS SH 21-35	754.62.33	21	35					
SS SH 21-40	754.62.43	21	40	141.2	141.9			
SS SH 21-50	754.62.63	21	50					
SS SH 23-25	754.62.14	23	25					
SS SH 23-30	754.62.24	23	30					
SS SH 23-35	754.62.34	23	35	153.2	153.9			
SS SH 23-40	754.62.44	23	40					
SS SH 23-50	754.62.64	23	50					
SS SH 25-25	754.62.15	25	25			165.2	165.9	
SS SH 25-30	754.62.25	25	30					
SS SH 25-35	754.62.35	25	35					
SS SH 25-40	754.62.45	25	40					
SS SH 25-50	754.62.65	25	50	165.2	165.9			
SS SH 27-25	754.62.16	27	25					
SS SH 27-30	754.62.26	27	30					
SS SH 27-35	754.62.36	27	35					
SS SH 27-40	754.62.46	27	40	165.2	165.9			
SS SH 27-50	754.62.66	27	50					
Inch Bores								
SS SH 21-1	754.66.12	21	1.000"	129.3	130.0	40	40	--
SS SH 21-1 <sup>3</sup> / <sub>16</sub>	754.66.22	21	1.188"					
SS SH 21-1 <sup>1</sup> / <sub>4</sub>	754.66.32	21	1.250"					
SS SH 21-1 <sup>7</sup> / <sub>16</sub>	754.66.42	21	1.438"					
SS SH 21-1 <sup>1</sup> / <sub>2</sub>	754.66.52	21	1.500"					
SS SH 25-1	754.66.15	25	1.000"	153.2	153.9			
SS SH 25-1 <sup>3</sup> / <sub>16</sub>	754.66.25	25	1.188"					
SS SH 25-1 <sup>1</sup> / <sub>4</sub>	754.66.35	25	1.250"					
SS SH 25-1 <sup>7</sup> / <sub>16</sub>	754.66.45	25	1.438"					
SS SH 25-1 <sup>1</sup> / <sub>2</sub>	754.66.55	25	1.500"					

For plastic chain series: 820, 831, SH, SHD.