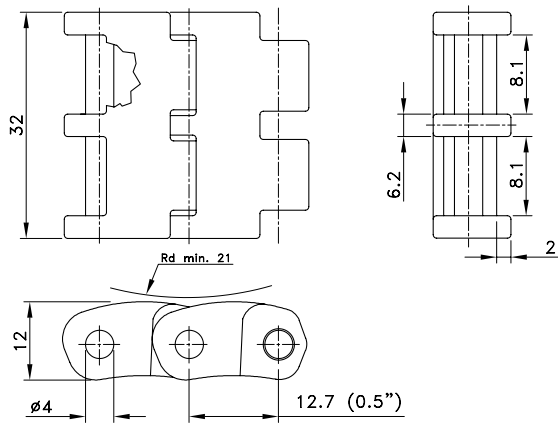


Straight Run Miniature



Chain Type	Code Number	Plate Width A		Weight kg/m	Working Load (max.) N (21°C)	Backflex Radius (min) mm	Plate Thickness mm
		mm	inch				
D-Acetal							
ZN 1108*	L1108WZN	32.0	1.26	0.51	800	21	12.0
SS 1108**	L1108WSS						

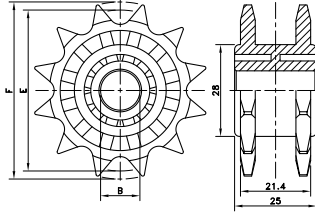
* With zinc plated pins.

** With stainless steel pins.

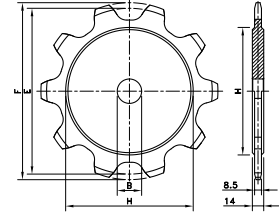
Standard length: 5 m - 16.4 feet (395 links).

These chains are recommended for packaging machines of pharmaceutical, cosmetic and food products; if installed to the base chain, it facilitates product head transfers.

N(X) 1108



ST 1080



Sprocket Type	Code Number	Number of Teeth	Bore	Pitch Diameter	Outside Diameter	Width (Teeth)	Hub Width	Hub Diameter
			B	E	F	C	A	H
			mm/inch	mm	mm	mm	mm	mm

Classic Sprocket and Idler, Injection Moulded - N(X) 1108

Sprocket, Metric Bore								
N1108 12-12	L1108666211	12	12	49.1	54.0	21.4	25.0	28.0
Idler, Metric Bore								
NX1108 12-12	L1108666231	12	12	49.1	54.0	21.4	25.0	28.0

For plastic chain series: 1108.

The drive sprocket is fixed by mounting a pin radially through sprocket and shaft.

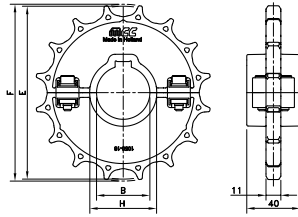
1108 plastic chains also run on standard 1/2" pitch roller chain sprockets that meet ANSI 40.

Classic Sprockets - ST 1080

Metric Prebores								
ST1080 08-30	L1080668371	8	30	165.9	177.7	8.5	14.0	119.0
ST1080 09-30	L1080668381	9	30	185.7	198.5	8.5	14.0	136.0
ST1080 10-30	L1080668391	10	30	205.5	219.3	8.5	14.0	158.0
ST1080 12-30	L1080668401	12	30	245.4	260.5	8.5	14.0	200.0
ST1080 14-30	L1080668411	14	30	285.4	301.5	8.5	14.0	240.0

For plastic chain series: 1080

SSW/SIW 1050



Sprocket Type	Code Number	Number of Teeth	Bore	Pitch Diameter	Outside Diameter	Width (Teeth)	Hub Width	Hub Diameter
			B	E	F	C	A	H
			mm/inch	mm	mm	mm	mm	mm

Split Sprockets and Idlers, Injection Moulded - SSW/SIW 1050

Sprockets, Metric Bores								
SSW 1050 16-30	749.82.23	16	30	130.2	130.9	11.0	40.0	40.0
SSW 1050 16-40	749.82.43	16	40	130.2	130.9	11.0	40.0	50.0
SSW 1050 18-30	749.82.25	18	30	146.3	146.8	11.0	40.0	40.0
SSW 1050 18-40	749.82.45	18	40	146.3	146.8	11.0	40.0	50.0
Sprockets, Inch Bores								
SSW 1050 16-1½	749.86.53	16	1.500"	130.2	130.9	11.0	40.0	48.1
SSW 1050 18-1½	749.86.55	18	1.500"	146.3	146.8	11.0	40.0	48.1
Idlers, Metric Bores								
SIW 1050-16-30	749.81.23	16	30	131.2	130.9	11.0	40.0	40.0
SIW 1050-16-40	749.81.43	16	40	131.2	130.9	11.0	40.0	50.0
SIW 1050-18-30	749.81.25	18	30	147.4	146.8	11.0	40.0	40.0
SIW 1050-18-40	749.81.45	18	40	147.4	146.8	11.0	40.0	50.0
Idlers, Inch Bores								
SIW 1050-16-1½	749.85.53	16	1.500"	131.2	130.9	11.0	40.0	48.1
SIW 1050-18-1½	749.85.55	18	1.500"	147.4	146.8	11.0	40.0	48.1

For plastic chain series: 1050, 1055, 1060.