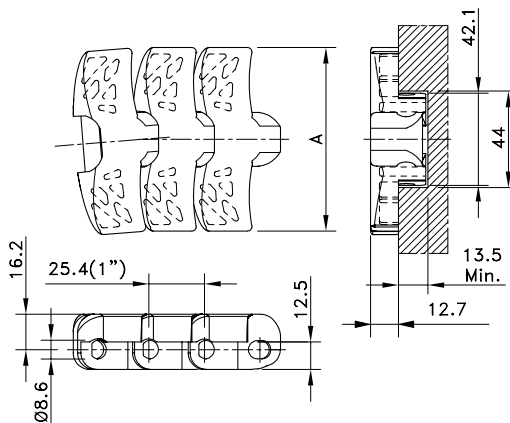


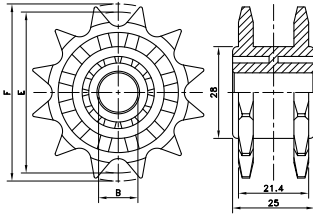
FlatTop Magnetflex® 1055



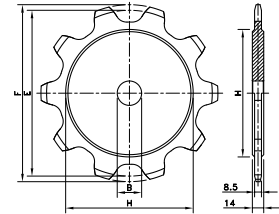
Chain Type	Code Number	Plate Width A		Weight kg/m	Sideflex Radius (min) mm	Working Load (max.) N (21°C)	Backflex Radius (min) mm	Plate Thickness mm
		mm	inch					
XLG-Acetal								
FTM 1055 XLG K330	749.41.31	83.8	3.30	1.90	500	2200	130	12.7
FTM 1055 XLG K450	749.41.42	114.3	4.50	2.20				
PSX Advanced Performance Polymer Alloy								
FTM 1055 PSX K330	749.10.53	83.8	3.30	1.90	500	2200	130	12.7
BWX-Polyamide Composite								
FTM 1055 BWX K330	749.18.57	83.8	3.30	1.90	500	2200	130	12.7
FTM 1055 BWX K450	749.10.05	114.3	4.50	2.20				

Standard length: 3.048 m - 10 feet (120 links).

N(X) 1108



ST 1080



Sprocket Type	Code Number	Number of Teeth	Bore	Pitch Diameter	Outside Diameter	Width (Teeth)	Hub Width	Hub Diameter
			B	E	F	C	A	H
			mm/inch	mm	mm	mm	mm	mm

Classic Sprocket and Idler, Injection Moulded - N(X) 1108

Sprocket, Metric Bore								
N1108 12-12	L1108666211	12	12	49.1	54.0	21.4	25.0	28.0
Idler, Metric Bore								
NX1108 12-12	L1108666231	12	12	49.1	54.0	21.4	25.0	28.0

For plastic chain series: 1108.

The drive sprocket is fixed by mounting a pin radially through sprocket and shaft.

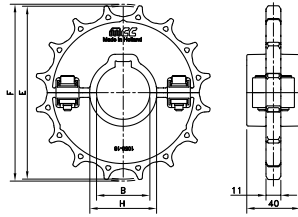
1108 plastic chains also run on standard 1/2" pitch roller chain sprockets that meet ANSI 40.

Classic Sprockets - ST 1080

Metric Prebores								
ST1080 08-30	L1080668371	8	30	165.9	177.7	8.5	14.0	119.0
ST1080 09-30	L1080668381	9	30	185.7	198.5	8.5	14.0	136.0
ST1080 10-30	L1080668391	10	30	205.5	219.3	8.5	14.0	158.0
ST1080 12-30	L1080668401	12	30	245.4	260.5	8.5	14.0	200.0
ST1080 14-30	L1080668411	14	30	285.4	301.5	8.5	14.0	240.0

For plastic chain series: 1080

SSW/SIW 1050



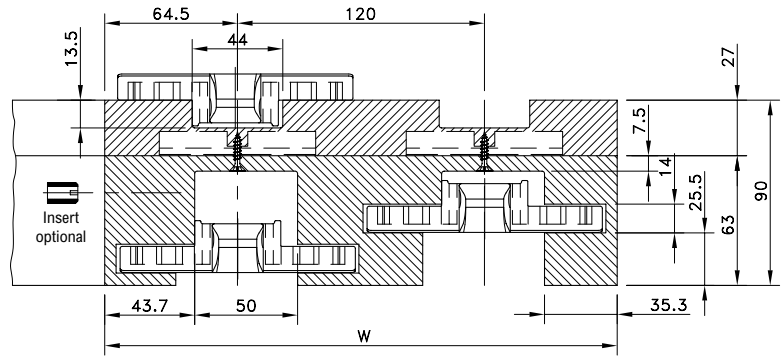
Sprocket Type	Code Number	Number of Teeth	Bore	Pitch Diameter	Outside Diameter	Width (Teeth)	Hub Width	Hub Diameter
			B	E	F	C	A	H
			mm/inch	mm	mm	mm	mm	mm

Split Sprockets and Idlers, Injection Moulded - SSW/SIW 1050

Sprockets, Metric Bores								
SSW 1050 16-30	749.82.23	16	30	130.2	130.9	11.0	40.0	40.0
SSW 1050 16-40	749.82.43	16	40	130.2	130.9	11.0	40.0	50.0
SSW 1050 18-30	749.82.25	18	30	146.3	146.8	11.0	40.0	40.0
SSW 1050 18-40	749.82.45	18	40	146.3	146.8	11.0	40.0	50.0
Sprockets, Inch Bores								
SSW 1050 16-1½	749.86.53	16	1.500"	130.2	130.9	11.0	40.0	48.1
SSW 1050 18-1½	749.86.55	18	1.500"	146.3	146.8	11.0	40.0	48.1
Idlers, Metric Bores								
SIW 1050-16-30	749.81.23	16	30	131.2	130.9	11.0	40.0	40.0
SIW 1050-16-40	749.81.43	16	40	131.2	130.9	11.0	40.0	50.0
SIW 1050-18-30	749.81.25	18	30	147.4	146.8	11.0	40.0	40.0
SIW 1050-18-40	749.81.45	18	40	147.4	146.8	11.0	40.0	50.0
Idlers, Inch Bores								
SIW 1050-16-1½	749.85.53	16	1.500"	131.2	130.9	11.0	40.0	48.1
SIW 1050-18-1½	749.85.55	18	1.500"	147.4	146.8	11.0	40.0	48.1

For plastic chain series: 1050, 1055, 1060.

Magnetflex Combi-A Version CC21



Number of Tracks	1	2	3	4
Width W	129 mm	249 mm	369 mm	489 mm
Version CC21				
15°	614.08.16	614.08.17	614.08.18	614.08.19
30°	614.08.31	614.08.32	614.08.33	614.08.34
45°	614.08.46	614.08.47	614.08.48	614.08.49
60°	614.08.61	614.08.62	614.08.63	614.08.64
75°	614.08.76	614.08.77	614.08.78	614.08.79
90°	614.08.01	614.08.02	614.08.03	614.08.04

More than 4 tracks on request.

• For plastic chains: FTM 1055 K450.

