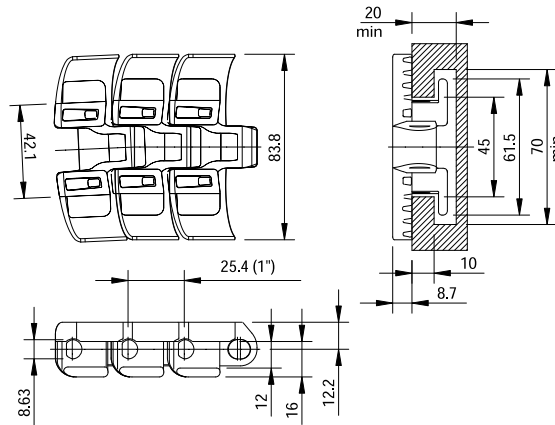


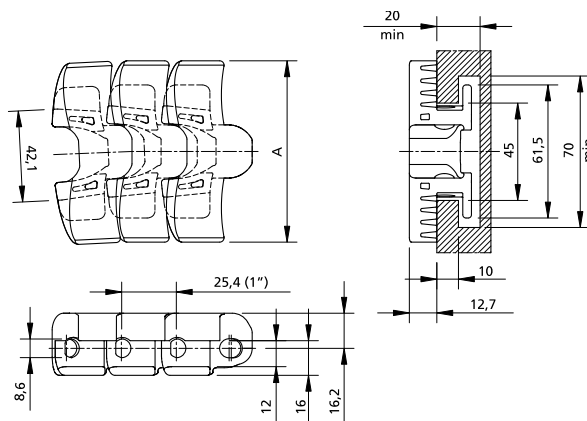
## FlatTop 1050 TAB



Chain Type	Code Number	Plate Width		Weight	Sideflex Radius (min)	Working Load (max.)	Backflex Radius (min)	Plate Thickness
		A						
		mm	inch	kg/m	mm	N (21°C)	mm	mm
<b>XLG-Acetal</b>								
FT 1050 XLG K330	749.61.31	83.8	3.30	1.93	500	1650	130	8.7
<b>BWX-Polyamide Composite</b>								
FT 1050 BWX K330	749.10.56	83.8	3.30	1.93	500	1650	130	8.7

Standard length: 3.048 m - 10 feet (120 links).

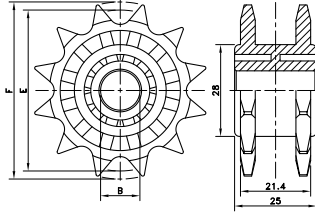
## FlatTop 1055 TAB



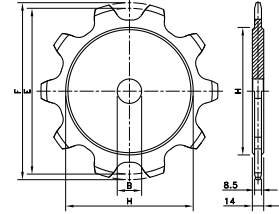
Chain Type	Code Number	Plate Width		Weight	Sideflex Radius (min)	Working Load (max.)	Backflex Radius (min)	Plate Thickness
		A						
		mm	inch	kg/m	mm	N (21°C)	mm	mm
<b>XLG-Acetal</b>								
FT 1055 XLG K330	749.71.31	83.8	3.30	2.13	500	2200	130	12.7
FT 1055 XLG K450	749.10.39	114.3	4.50	2.30	500	2200	130	12.7
<b>BWX-Polyamide Composite</b>								
FT 1055 BWX K330	749.10.57	83.8	3.30	2.13	500	2200	130	12.7
FT 1055 BWX K450	749.10.51	114.3	4.50	2.30	500	2200	130	12.7

Standard length: 3.048 m - 10 feet (120 links).

## N(X) 1108



## ST 1080



Sprocket Type	Code Number	Number of Teeth	Bore	Pitch Diameter	Outside Diameter	Width (Teeth)	Hub Width	Hub Diameter
			B	E	F	C	A	H
			mm/inch	mm	mm	mm	mm	mm

### Classic Sprocket and Idler, Injection Moulded - N(X) 1108

Sprocket, Metric Bore								
N1108 12-12	L1108666211	12	12	49.1	54.0	21.4	25.0	28.0
Idler, Metric Bore								
NX1108 12-12	L1108666231	12	12	49.1	54.0	21.4	25.0	28.0

For plastic chain series: 1108.

The drive sprocket is fixed by mounting a pin radially through sprocket and shaft.

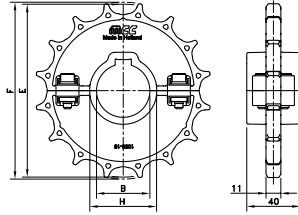
1108 plastic chains also run on standard 1/2" pitch roller chain sprockets that meet ANSI 40.

### Classic Sprockets - ST 1080

Metric Prebores								
ST1080 08-30	L1080668371	8	30	165.9	177.7	8.5	14.0	119.0
ST1080 09-30	L1080668381	9	30	185.7	198.5	8.5	14.0	136.0
ST1080 10-30	L1080668391	10	30	205.5	219.3	8.5	14.0	158.0
ST1080 12-30	L1080668401	12	30	245.4	260.5	8.5	14.0	200.0
ST1080 14-30	L1080668411	14	30	285.4	301.5	8.5	14.0	240.0

For plastic chain series: 1080

## SSW/SIW 1050



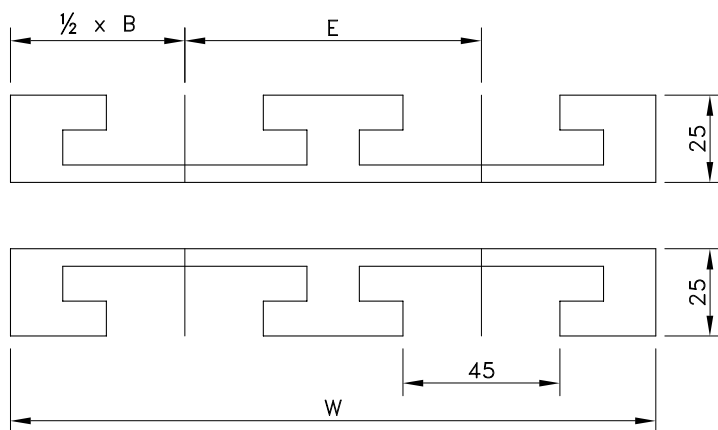
Sprocket Type	Code Number	Number of Teeth	Bore	Pitch Diameter	Outside Diameter	Width (Teeth)	Hub Width	Hub Diameter
			B	E	F	C	A	H
			mm/inch	mm	mm	mm	mm	mm

### Split Sprockets and Idlers, Injection Moulded - SSW/SIW 1050

Sprockets, Metric Bores								
SSW 1050 16-30	749.82.23	16	30	130.2	130.9	11.0	40.0	40.0
SSW 1050 16-40	749.82.43	16	40	130.2	130.9	11.0	40.0	50.0
SSW 1050 18-30	749.82.25	18	30	146.3	146.8	11.0	40.0	40.0
SSW 1050 18-40	749.82.45	18	40	146.3	146.8	11.0	40.0	50.0
Sprockets, Inch Bores								
SSW 1050 16-1½	749.86.53	16	1.500"	130.2	130.9	11.0	40.0	48.1
SSW 1050 18-1½	749.86.55	18	1.500"	146.3	146.8	11.0	40.0	48.1
Idlers, Metric Bores								
SIW 1050-16-30	749.81.23	16	30	131.2	130.9	11.0	40.0	40.0
SIW 1050-16-40	749.81.43	16	40	131.2	130.9	11.0	40.0	50.0
SIW 1050-18-30	749.81.25	18	30	147.4	146.8	11.0	40.0	40.0
SIW 1050-18-40	749.81.45	18	40	147.4	146.8	11.0	40.0	50.0
Idlers, Inch Bores								
SIW 1050-16-1½	749.85.53	16	1.500"	131.2	130.9	11.0	40.0	48.1
SIW 1050-18-1½	749.85.55	18	1.500"	147.4	146.8	11.0	40.0	48.1

For plastic chain series: 1050, 1055, 1060.

## KTX for single hinge chains



Number of Tracks	1	2	3	Pitch	Basic Width	Radius
				E	M	R
				mm	mm	mm

### Version KTX 013

Width W	100 mm	190 mm	280 mm	For 3.25" wide chains		
15°	L0KTX649933	L0KTX649943	L0KTX649953	90	100	500
30°	L0KTX649963	L0KTX649973	L0KTX649983			
45°	L0KTX649993	L0KTX650003	L0KTX650013			
60°	L0KTX650023	L0KTX650033	L0KTX650043			
75°	L0KTX650053	L0KTX650063	L0KTX650073			
90°	L0KTX650083	L0KTX650093	L0KTX650103			

### Version KTX 018

Width W	125 mm	245 mm	365 mm	For 4.50" wide chains		
15°	L0KTX650113	L0KTX650123	L0KTX650133	120	120	120
30°	L0KTX650143	L0KTX650153	L0KTX650163			
45°	L0KTX650173	L0KTX650183	L0KTX650193			
60°	L0KTX650203	L0KTX650213	L0KTX650223			
75°	L0KTX650233	L0KTX650243	L0KTX650253			
90°	L0KTX650263	L0KTX650273	L0KTX650283			

### Version KTU 013

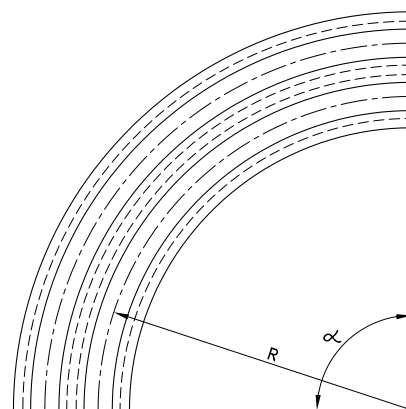
Width W	100 mm	190 mm	280 mm	For 3.25" wide chains		
15°	787.02.77	787.0 8.24	787.08.25	90	100	500
30°	787.05.60	787.08.29	787.08.30			
45°	787.03.08	787.04.06	787.08.34			
60°	787.05.71	787.08.38	787.08.39			
75°	787.05.77	787.08.43	787.08.44			
90°	787.00.02	787.00.51	787.00.50			

### Version KTU 018

Width W	125 mm	245 mm	365 mm	For 4.50" wide chains		
15°	787.08.49	787.08.50	787.08.51	120	125	610
30°	787.08.55	787.08.56	787.08.57			
45°	787.07.37	787.08.61	787.08.62			
60°	787.08.66	787.08.67	787.08.68			
75°	787.08.72	787.08.73	787.08.74			
90°	787.01.09	787.00.87	787.01.10			

### Version KTU 030

Width W	200 mm	395 mm	590 mm	For 7.50" wide chains		
15°	787.08.80	787.08.81	787.08.82	195	200	610
30°	787.08.86	787.08.87	787.08.88			
45°	787.08.92	787.08.93	787.08.94			
60°	787.08.98	787.08.99	787.09.00			
75°	787.09.04	787.09.05	787.09.06			
90°	787.00.07	787.01.11	787.01.12			



For steel chains:

- 8811 TAB
- 881 TAB
- 66 T 72 RM

For plastic chains:

- 880 TAB
- 880 TAB BO
- 879 TAB
- 879 TAB BO
- 880 TAB BOT
- RH
- RHD
- 1050 TAB
- 1055 TAB

## KTU for single hinge chains



The code nr. includes both upper and under part.