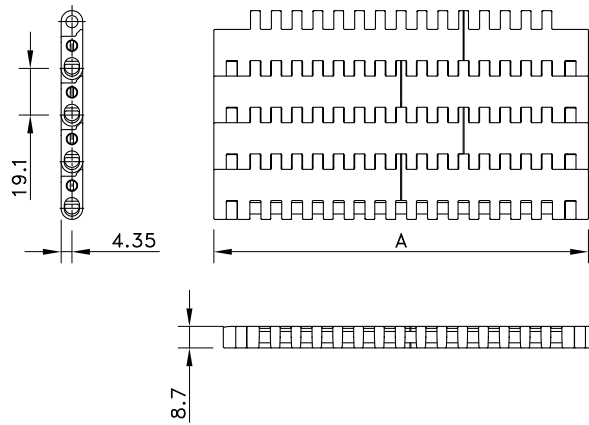
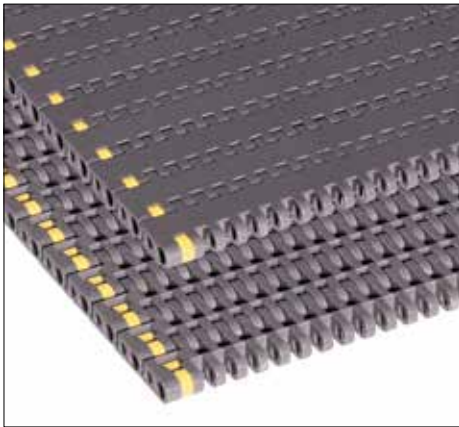


Solid Top 8505



Assembly	Belt Type	Code Number*	Temperature range °C		Working Load (max.) N/m (21°C)	Weight kg/m ²	Backflex Radius (min.) mm
			Dry	Wet			

HP-Acetal with Polypropylene Pins

Standard	HP 8505	I8505HPKxx	-40 to +80	-40 to +65	29000	8.89	25
DTS Left/Positrack	HP 8505 K450 DTS-SX	81415811					
DTS Right/Positrack	HP 8505 K450 DTS-DX	81415791					

WHT-Polypropylene with Polypropylene Pins

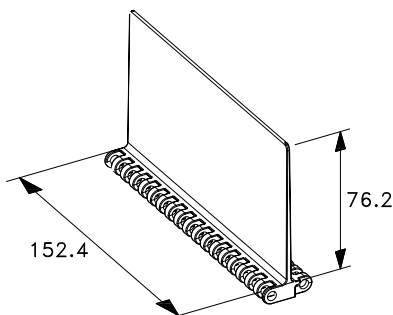
Standard	WHT 8505	I8505HTKxx	5 to 105	5 to 105	16000	5.96	25
----------	----------	------------	----------	----------	-------	------	----

* In code numbers xx corresponds with the belt width (A). Standard widths of these belts begin at 6", with 6" increments up to 120"; special widths begin at 2 1/3" with 1/3" increments. See also page 208.

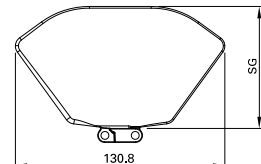
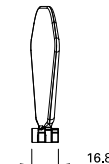
If you require flights, sideguards or tab guides, please describe the belt by choosing from the options listed in the 2nd column of the table:

Material	HP or WHT	
Belt type	8505	
Width (A)	K.. (in inches)	Belts with flights have a minimal width of 6"
Flights	F3 or F2 or F1 or H..	Standard height of 3", 2", 1" or special height in mm
Pitch between flights	T..P	Flights on every .. th row; with sideguards it must correspond to an even number of rows
Flight side-indent	N.. (in inches)	Any indent with increments of 0.25IN is possible
Sideguards	SG2 or SG1	Standard height of 2" or 1"
Tab guides	D..	TAB1 is only one row; TAB2 is two rows
Distance between Tabs		Minimal 3" with increments of 3/8"
Pitch between Tabs	D..P	Must correspond to an even number of rows

Example: HP 8505 K16 1/3 F3 T4P N2 1/3 TAB2 D3 D4P is a 8505 Solid Top belt, made of dark grey acetal, width 16 1/3", 3" high flights on every 4th row at 2 1/3" from the sides, no sideguards and 2 rows of tabs with a distance in-between of 3" on every 4th row.

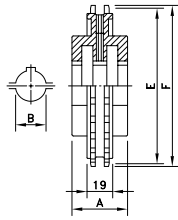
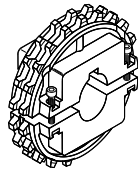


Sideguards 8500-series

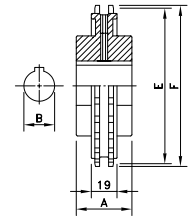
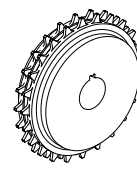


Flight 8500-series for inclined applications

Split Sprockets



Classic Sprockets



Sprocket Type	Code Number	Number of Teeth	Bore	Pitch Diameter	Outside Diameter	Hub Width
			B mm	E mm	F mm	A mm

Split Sprockets

Round Bores

NS 8500 T17 R25	614-176-25	17	25	104.7	105.4	39
NS 8500 T17 R30	614-176-30	17	30			
NS 8500 T17 R35	614-176-35	17	35			
NS 8500 T21 R25	614-239-1	21	25	129.0	130.0	
NS 8500 T21 R30	614-239-2	21	30			
NS 8500 T21 R35	614-239-3	21	35			
NS 8500 T21 R40	614-239-4	21	40	147.3	148.3	
NS 8500 T24 R25	614-188-25	24	25			
NS 8500 T24 R30	614-188-30	24	30			
NS 8500 T24 R35	614-188-35	24	35	153.4	154.7	
NS 8500 T25 R25	614-192-25	25	25			
NS 8500 T25 R30	614-192-30	25	30			
NS 8500 T25 R35	614-192-35	25	35			

Square Bores

NS 8500 T17 S25	614-177-1	17	25	104.7	105.4	39
NS 8500 T17 S30	614-177-2	17	30			
NS 8500 T17 S35	614-177-3	17	35			
NS 8500 T21 S25	614-240-1	21	25	129.0	130.0	
NS 8500 T21 S40	614-240-2	21	40			
NS 8500 T21 S60	614-240-3	21	60			
NS 8500 T24 S25	614-189-1	24	25	147.3	148.3	
NS 8500 T24 S30	614-189-5	24	30			
NS 8500 T24 S35	614-189-4	24	35			
NS 8500 T25 S25	614-193-1	25	25	153.4	154.7	
NS 8500 T25 S30	614-193-6	25	30			
NS 8500 T25 S35	614-193-5	25	35			

Classic Sprockets

Round Bores

KU 8500 T24 R30	114-3046-8	24	30	147.3	148.3	35
KU 8500 T25 R50	114-3266-2	25	50	153.4	154.7	

Square Bores

KU 8500 T17 S40	114-3215-2	17	40	104.7	105.4	35
KU 8500 T25 S40	114-3216-2	25	40	153.4	154.7	