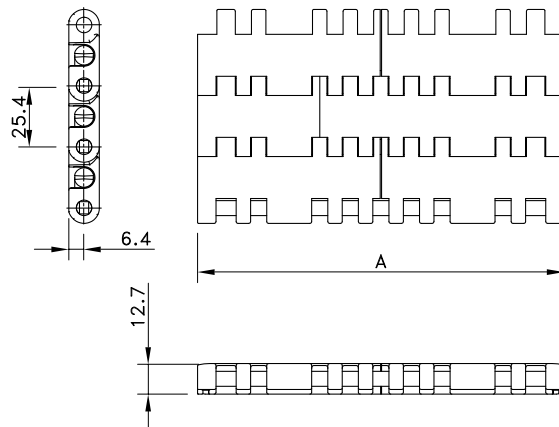
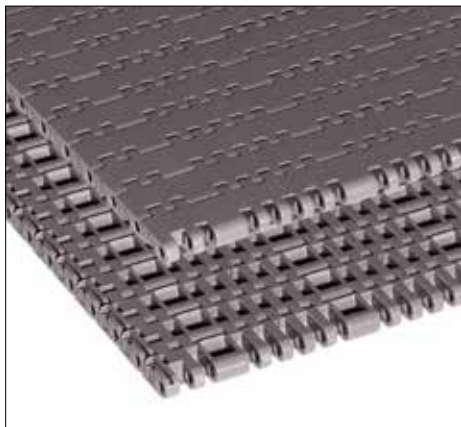


# Solid Top 7705

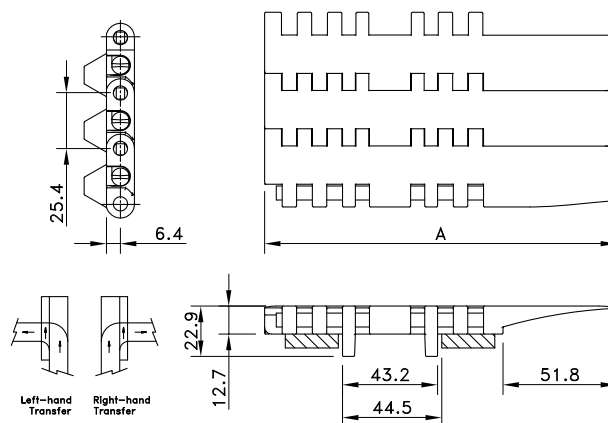


Assembly	Belt Type	Code Number*	Temperature range °C		Working Load (max.) N/m (21°C)	Weight kg/m <sup>2</sup>	Backflex Radius (min.) mm
			Dry	Wet			
<b>HP-Acetal with PBT Pins</b>							
Standard	HP 7705	I7705HPKxx	-40 to +80	-40 to +65	43000 N/m	13.47 kg/m <sup>2</sup>	25
DTS Left Positrack	HP 7705 K450 DTS-SX LEFT (PT)	81413921					
	HP 7705 K750 DTS-SX LEFT (PT)	81413922					
DTS right Positrack	HP 7705 K450 DTS-DX RIGHT (PT)	81413931					
	HP 7705 K750 DTS-DX RIGHT (PT)	81413932					
Mould to width positrack	HP7705PTK325 (MTW-PT)	81415101					
	HP7705PTK450 (MTW-PT)	81415141	4559 N	1.39 kg/m			
	HP7705PTK750 (MTW-PT)	81415181	7784 N	2.58 kg/m			
<b>BWX-Acetal with PBT Pins</b>							
Standard	BWX7705	BWX7705-xx	-40 to +80	Not recommended	43000 N/m	13.47 kg/m <sup>2</sup>	25
Mould to width positrack	BWX7705PTK325 (MTW-PT)	I7705WX645713			3047 N	1.03 kg/m	
	BWX7705PTK450 (MTW-PT)	81445361			4559 N	1.39 kg/m	
	BWX7705PTK750 (MTW-PT)	I7705WX651333			7784 N	2.58 kg/m	

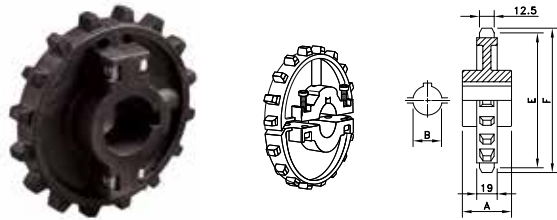
\* In code numbers xx corresponds with the belt width (A). Standard widths of these belts begin at 6" with 3" increments up to 120". Special widths start from 5" with 1/2" increments. see also page 208. Upon request 7705 belts can be supplied in metric versions. 7705 belts are also available with rubber top in HTF and TCF versions. Please contact Customer Service for more details.



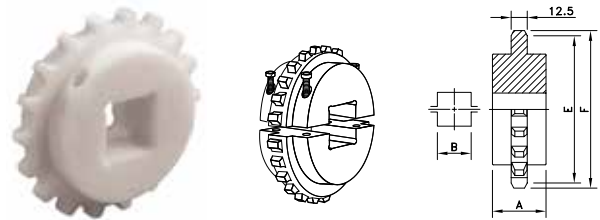
Dynamic Transfer System (DTS®)



## Split Sprockets Injection Moulded

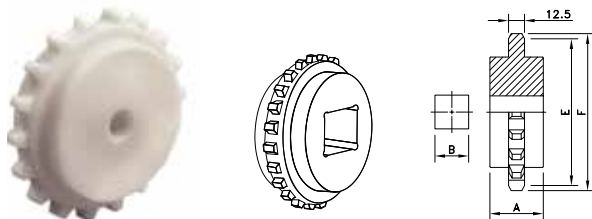


## Split Sprockets Machined



Sprocket Type	Code Number	Number of Teeth	Bore	Pitch Diameter	Outside Diameter	Hub Width
			B	E	F	A
Round Bores						
mm/inch						
NS 7700 T16 R25	614-62-25	16	25	130.2	130.6	51
NS 7700 T16 R30	614-62-30	16	30			
NS 7700 T16 R35	614-62-35	16	35			
NS 7700 T16 R40	614-62-40	16	40			
NS 7700 T18 R25	614-60-25	18	25	146.3	146.9	
NS 7700 T18 R30	614-60-30	18	30			
NS 7700 T18 R35	614-60-35	18	35			
NS 7700 T18 R40	614-60-40	18	40			
NS 7700 T21 R25	614-63-25	21	25	170.4	170.7	
NS 7700 T21 R30	614-63-30	21	30			
NS 7700 T21 R35	614-63-35	21	35			
NS 7700 T21 R40	614-63-40	21	40			
Square Bores						
KUS 7700 T16 S40	614-370-4	16	40	130.2	130.6	51
KUS 7700 T18 S40	I7700604166	18	40	146.3	146.9	
KUS 7700 T18 S50	7700604176	18	50			
KUS 7700 T21 S40	614-383-4	21	40	170.3	170.7	
KUS 7700 T21 S50	614-383-6	21	50			
KUS 7700 T21 S60	614-383-8	21	60			

## Classic Sprockets Machined



Sprocket Type	Code Number	Number of Teeth	Bore	Pitch Diameter	Outside Diameter	Hub Width
			B	E	F	A
mm/inch						
Square Bores						
KU 7700 T18 S50	114-3926-10	18	50	146.3	146.9	48
KU 7700 T18 S60	114-3926-12	18	60			
KU 7700 T21 S50	114-3925-12	21	50	170.3	170.7	
KU 7700 T21 S60	114-3925-14	21	60			
KU 7700 T21 S65	114-3925-15	21	65			
KU 7700 T25 S50	114-3927-13	25	50	202.7	204.2	

Round bores are available upon request.