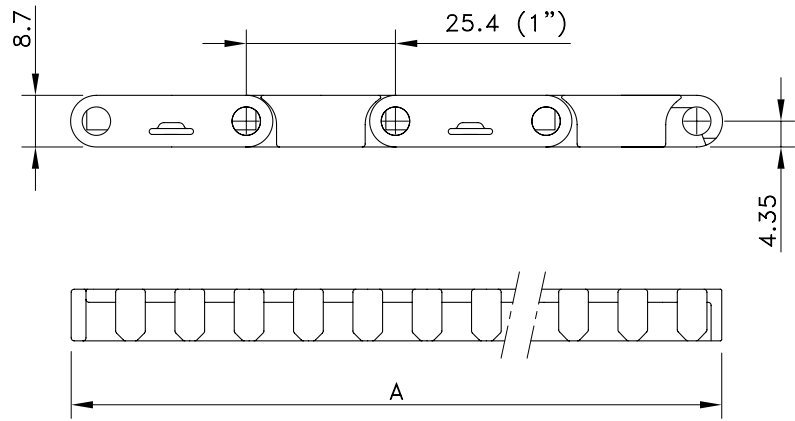
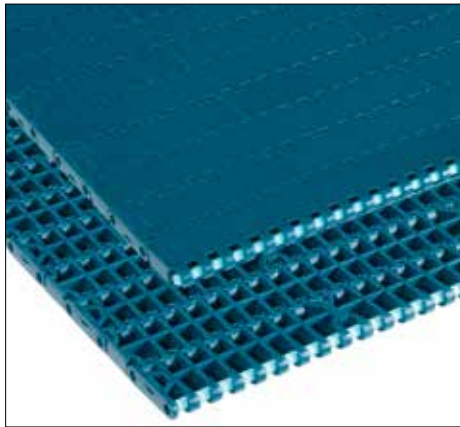


FlatTop 1000



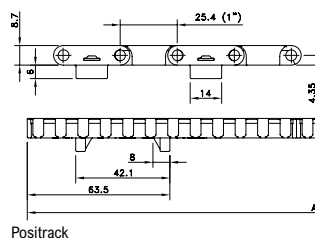
| Assembly | Belt Type | Code Number* | Temperature range °C | | Working Load (max.) N/m (21°C) | Weight kg/m ² | Backflex Radius (min.) mm |
|---|-------------------|--------------|----------------------|------------|-----------------------------------|-----------------------------|------------------------------|
| | | | Dry | Wet | | | |
| XLG-Acetal with Polypropylene Pins (84 has PBT pins) | | | | | | | |
| Standard | FT 1000 XLG | 817.30.xx | 4 to 80 | 4 to 65 | 22000 | 6.50 | 25 |
| Double positrack | FTDP 1000 XLG | 873.27.xx | | | | | |
| Positrack 1 side, freeflow 1 side | FFTP 1000 XLG 1xP | 873.08.xx | | | | | |
| Positrack 2 sides, freeflow 1 side | FFTP 1000 XLG 2xP | 873.07.xx | | | | | |
| Double positrack 84 | FTDP 1000 XLG 84 | 873.21.09 | -30 to +80 | up to 65 | | | |
| PEX Advanced Performance Polymer Alloy with PBT pins | | | | | | | |
| Standard | FT 1000 PSX | 873.78.xx | 4 to 80 | 4 to 65 | 22000 | 6.50 | 25 |
| Double positrack | FTDP 1000 PSX | 873.79.xx | | | | | |
| Positrack 1 side, freeflow 1 side | FFTP 1000 PSX 1xP | 873.81.xx | | | | | |
| Positrack 2 sides, freeflow 1 side | FFTP 1000 PSX 2xP | 873.82.xx | | | | | |
| Double positrack 84 | FTDP 1000 PSX 84 | 873.79.09 | -30 to +80 | up to 65 | | | |
| XP-Polypropylene with Polypropylene Pins | | | | | | | |
| Standard | FT 1000 XP | 818.30.xx | 4 to 104 | 4 to 104 | 11000 | 4.25 | 25 |
| Double positrack | FTDP 1000 XP | 873.29.xx | | | | | |
| WLT-Polyethylene with Polyethylene Pins | | | | | | | |
| Standard | WLT 1000 FT | 812.60.xx | -70 to +35 | -70 to +35 | 5000 | 4.60 | 25 |
| WHT-Polypropylene with Polypropylene Pins | | | | | | | |
| Standard | WHT 1000 FT | 811.80.xx | 4 to 104 | 4 to 104 | 11000 | 4.30 | 25 |
| WSM-Acetal with Polypropylene Pins | | | | | | | |
| Standard | WSM 1000 FT | 815.70.xx | 4 to 80 | 4 to 65 | 22000 | 6.50 | 25 |
| Double positrack | WSM 1000 FTDP | 873.28.xx | | | | | |

* In code numbers xx corresponds with the belt width (A), starting with 10 for 85 mm, 11 for 170 mm and so on with 85 mm increments, or optionally 5 mm, up to 6120 mm; see also page 208.

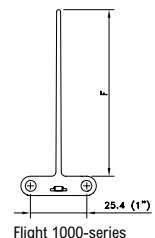
If you need flights, describe the belt by choosing from the required options listed in the 2nd column of the table:

| | | |
|-----------------------|------------------------------|---|
| Material | WLT or WHT or WSM | |
| Belt type | 1000 FT or 1000 FTDP | (Double) Positrack not possible for WLT, BLT and WHT |
| Width (A) | KM-.. (in mm) | Belts with flights have a minimal width of 130 mm with 10 mm increments |
| Flights | F3 or F2 or F1 or H.. | Standard height of 3", 2", 1" or special height in mm |
| Pitch between flights | T..P | Flights on every .. th row (must correspond to an even number of rows) |
| Flight side-indent | N.. (in mm) | Minimal 40 mm with 5 mm increments |

Example: WSM 1000 FTDP KM-430 H50 T6P N45 is a 1000 Flat Top belt with Double Positrack, made of white acetal, special width 430 mm, special 50 mm high flights on every 6th row at 45 mm from the sides

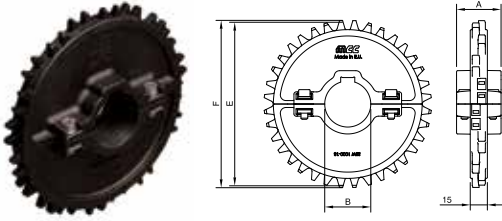


Positrack



Flight 1000-series

Split Sprockets Wide Hub

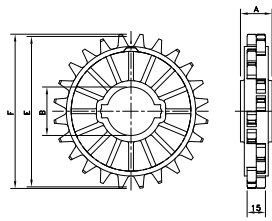


| Sprocket Type | Code Number | Number of Teeth | Bore | Pitch Diameter | Outside Diameter | Hub Width |
|---------------------|-------------|-----------------|---------|----------------|------------------|-----------|
| | | | B | E | F | A |
| | | | mm/inch | mm | mm | mm |
| Round Bores | | | | | | |
| SSW 1000 16-30 | 899.06.17 | 16 | 30 mm | 130.2 | 130.6 | 39 |
| SSW 1000 16-35 | 899.06.10 | 16 | 35 mm | | | |
| SSW 1000 16-40 | 899.06.11 | 16 | 40 mm | | | |
| SSW 1000 18-30 | 899.08.17 | 18 | 30 mm | 146.3 | 146.8 | |
| SSW 1000 18-35 | 899.08.10 | 18 | 35 mm | | | |
| SSW 1000 18-40 | 899.08.11 | 18 | 40 mm | | | |
| SSW 1000 20-30 | 899.09.17 | 20 | 30 mm | 162.4 | 163.1 | |
| SSW 1000 20-35 | 899.09.10 | 20 | 35 mm | | | |
| SSW 1000 20-40 | 899.09.11 | 20 | 40 mm | | | |
| SSW 1000 16-1½ | 899.06.31 | 16 | 1.5" | 130.2 | 130.6 | |
| SSW 1000 18-1½ | 899.08.31 | 18 | 1.5" | 146.3 | 146.8 | |
| SSW 1000 20-1½ | 899.09.31 | 20 | 1.5" | 162.4 | 163.1 | |
| Square Bores | | | | | | |
| SSW 1000 16-40x40 | 899.06.21 | 16 | 40 mm | 130.2 | 130.6 | 39 |
| SSW 1000 18-40x40 | 899.08.21 | 18 | 40 mm | 146.3 | 146.8 | |
| SSW 1000 20-40x40 | 899.09.21 | 20 | 40 mm | 162.4 | 163.1 | |
| SSW 1000 16-1½x1½ | 899.06.41 | 16 | 1.5" | 130.2 | 130.6 | |
| SSW 1000 18-1½x1½ | 899.08.41 | 18 | 1.5" | 146.3 | 146.8 | |
| SSW 1000 20-1½x1½ | 899.09.41 | 20 | 1.5" | 162.4 | 163.1 | |

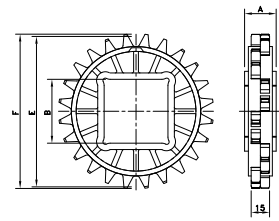
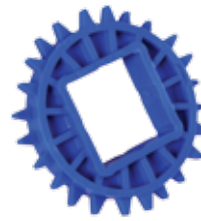
For wide hub sprockets with round bore one keyway is sufficient.

For humid, hot applications like pasteurizing, special sprockets are available; see next page.

Classic Sprockets



Classic Sprockets for Humid, Hot Applications like Pasteurizing



| Sprocket Type | Code Number | Number of Teeth | Bore | Pitch Diameter | Outside Diameter | Hub Width |
|--|-------------|-----------------|-------|----------------|------------------|-----------|
| | | | B | E | F | A |
| Round Bores | | | | | | |
| mm/inch | | | | | | |
| mm | | | | | | |
| Round Bores | | | | | | |
| CS 1000 12-30 | 895.02.17 | 12 | 30 mm | 98.1 | 96.5 | 20 |
| CS 1000 12-40 | 895.02.11 | 12 | 40 mm | | | |
| CS 1000 12-50 | 895.02.12 | 12 | 50 mm | | | |
| CS 1000 18-30 | 895.08.17 | 18 | 30 mm | 146.3 | 145.9 | |
| CS 1000 18-35 | 895.08.10 | 18 | 35 mm | | | |
| CS 1000 18-40 | 895.08.11 | 18 | 40 mm | | | |
| CS 1000 18-45 | 895.08.15 | 18 | 45 mm | | | |
| CS 1000 18-50 | 895.08.12 | 18 | 50 mm | | | |
| CS 1000 18-65 | 895.08.13 | 18 | 65 mm | 162.4 | 161.7 | 30 |
| CS 1000 20-35 | 895.09.10 | 20 | 35 mm | | | |
| CS 1000 20-40 | 895.09.11 | 20 | 40 mm | | | |
| CS 1000 20-50 | 895.09.12 | 20 | 50 mm | 146.3 | 145.9 | 20 |
| CS 1000 12-1 | 895.02.46 | 12 | 1.0" | | | |
| CS 1000 18-1 | 895.08.46 | 18 | 1.0" | | | |
| CS 1000 18-1½ | 895.08.41 | 18 | 1.5" | | | |
| CS 1000 18-2 | 895.08.42 | 18 | 2.0" | | | |
| CS 1000 20-1 | 895.09.46 | 20 | 1.0" | | | |
| CS 1000 20-1½ | 895.09.41 | 20 | 1.5" | 162.4 | 161.7 | |
| Square Bores | | | | | | |
| CS 1000 18-40x40 | 895.08.21 | 18 | 40 mm | 146.3 | 145.9 | 20 |
| CS 1000 18-60x60 | 895.08.28 | 18 | 60 mm | | | |
| CS 1000 18-65x65 | 895.08.23 | 18 | 65 mm | | | |
| CS 1000 20-40x40 | 895.09.21 | 20 | 40 mm | 162.4 | 161.7 | 20 |
| CS 1000 20-60x60 | 895.09.28 | 20 | 60 mm | | | |
| CS 1000 20-65x65 | 895.09.23 | 20 | 65 mm | | | |
| CS 1000 12-1½x1½ | 895.02.51 | 12 | 1.5" | 98.1 | 96.5 | 20 |
| CS 1000 18-1½x1½ | 895.08.51 | 18 | 1.5" | 146.3 | 145.9 | |
| CS 1000 20-1½x1½ | 895.09.51 | 20 | 1.5" | 162.4 | 161.7 | |
| Classic Sprockets for Humid, Hot Applications like Pasteurizing | | | | | | |
| Square Bores | | | | | | |
| CS 1000 12-40x40 POM | 893.02.21 | 12 | 40 mm | 98.1 | 96.5 | 20 |
| CS 1000 18-40x40 POM | 893.08.21 | 18 | 40 mm | 146.3 | 145.9 | 20 |
| CS 1000 18-60x60 POM | 893.08.28 | 18 | 60 mm | | | |
| CS 1000 20-40x40 POM | 893.09.21 | 20 | 40 mm | 162.4 | 161.7 | 20 |
| CS 1000 20-60x60 POM | 893.09.28 | 20 | 60 mm | | | |