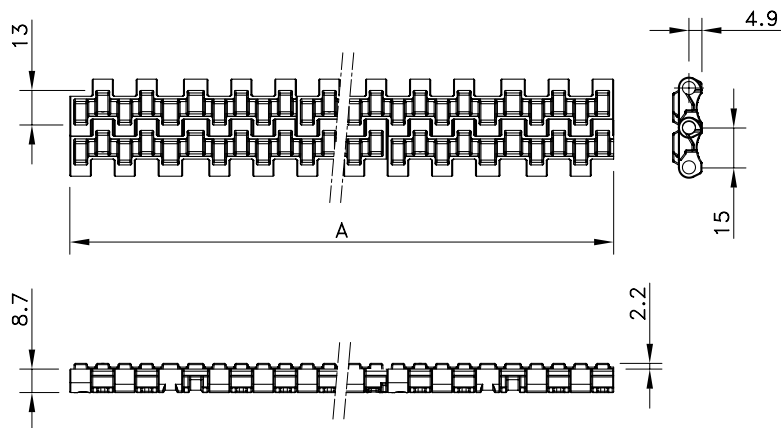
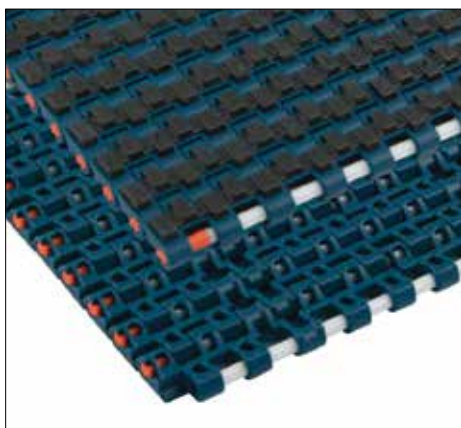


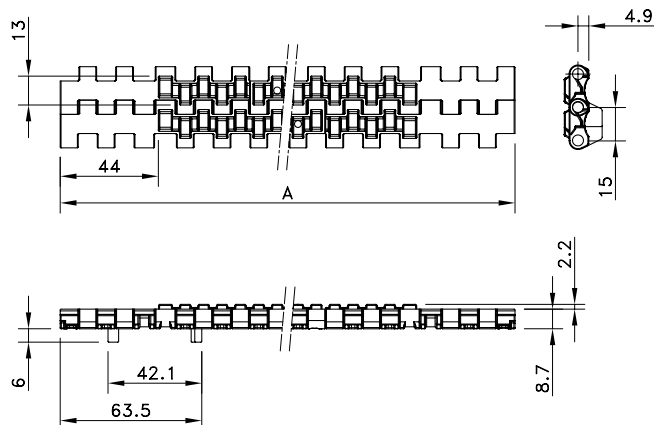
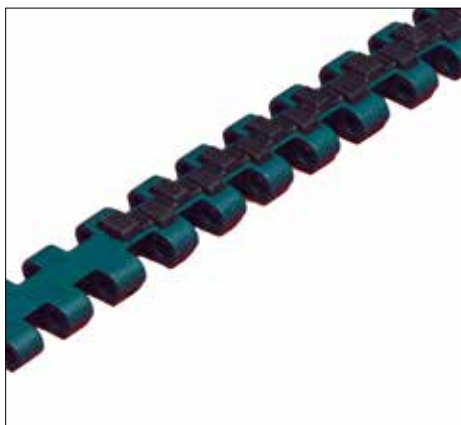
# Flat Top 1505 Supergrip



Assembly	Belt Type	Code Number*	Temperature range °C		Working Load (max.) N/m (21°C)	Weight kg/m <sup>2</sup>	Backflex Radius (min.) mm
			Dry	Wet			
<b>XLG-Acetal with PBT Pins</b>							
Standard	SG 1505 XLG	878.00.xx	-40 to +80	-40 to +65	13200	6.35	25
Double Positrack	SGDP 1505 XLG	878.12.xx					
Side-Indent	SGS 1505 XLG	878.01.xx					
Side-Indent Double Positrack	SGSDP 1505 XLG	878.13.xx					
<b>XP-Polypropylene with PBT Pins</b>							
Standard	SG 1505 XP	878.02.xx	4 to 80	4 to 65	7300	4.49	25
Double Positrack	SGDP 1505 XP	878.14.xx					
Side-Indent	SGS 1505 XP	878.03.xx					
Side-Indent Double Positrack	SGSDP 1505 XP	878.15.xx					
<b>WSM-Acetal with PBT Pins</b>							
Standard	SG 1505 WSM	878.06.xx	-40 to +80	-40 to +65	13200	6.35	25
Double Positrack	SGDP 1505 WSM	878.16.xx					
Side-Indent	SGS 1505 WSM	878.07.xx					
Side-Indent Double Positrack	SGSDP 1505 WSM	878.17.xx					
<b>WHT-Polypropylene with P Pins</b>							
Standard	SG 1505 WHT	878.04.xx	4 to 80	4 to 65	7300	4.49	25
Double Positrack	SGDP 1505 WHT	878.18.xx					
Side-Indent	SGS 1505 WHT	878.05.xx					
Side-Indent Double Positrack	SGSDP 1505 WHT	878.19.xx					

\* In code numbers xx corresponds with the belt width (A), starting with 11 for 170 mm, 12 for 255 mm and so on in steps of 85 mm, up to 6120 mm. SuperGrip Side-indent versions start with 255 mm width. See page 208 for all code numbers. Cut to width options are possible. Side-indent in SuperGrip versions is 44 mm.

Rubber top is a black elastomere, with a hardness of 40 (XP) or 50 (XLG,WSM) or 60 (WHT) shore A.



1505 Supergrip Side-Indent

1505 Supergrip Side-Indent with Positrack

