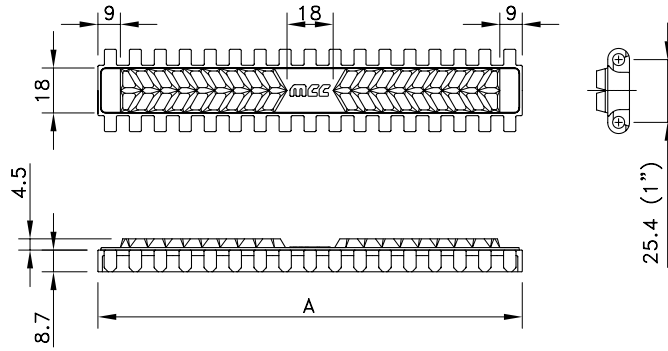
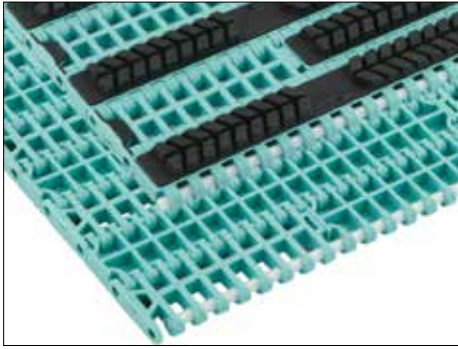


Supergrip 1000



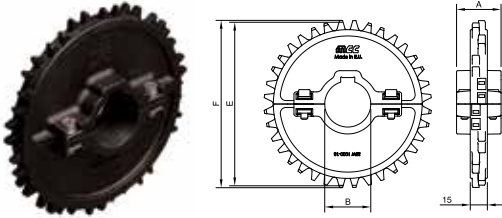
Assembly	Belt Type	Code Number*	Width A	Temperature range °C		Working Load (max.) N/m (21°C)	Weight kg/m ²	Backflex Radius (min.) mm
			mm	Dry	Wet			
XP-Polypropylene with PBT Pins								
Standard	SG 1000 XP 170	875.00.11	170	4 to 65	4 to 65	11000	5.00	30
	SG 1000 XP 255	875.00.12	255				5.33	
	SG 1000 XP 340	875.00.13	340				5.50	
	SG 1000 XP 425	875.00.14	425				5.60	
	SG 1000 XP 510	875.00.15	510				5.66	
	SG 1000 XP 595	875.00.16	595				5.71	
	SG 1000 XP 680	875.00.17	680				5.75	
Double positrack	SGDP 1000 XP 170	875.54.11	170	4 to 65	4 to 65	11000	5.00	30
	SGDP 1000 XP 255	875.54.12	255				5.33	
	SGDP 1000 XP 340	875.54.13	340				5.50	
	SGDP 1000 XP 425	875.54.14	425				5.60	
	SGDP 1000 XP 510	875.54.15	510				5.66	
	SGDP 1000 XP 595	875.54.16	595				5.71	
	SGDP 1000 XP 680	875.54.17	680				5.75	
XLG-Acetal with Polypropylene Pins								
Standard	SG 1000 XLG 170	875.30.11	170	4 to 65	4 to 65	19000	7.34	30
	SG 1000 XLG 255	875.30.12	255				7.70	
	SG 1000 XLG 340	875.30.13	340				7.88	
	SG 1000 XLG 425	875.30.14	425				7.99	
	SG 1000 XLG 510	875.30.15	510				8.06	
	SG 1000 XLG 595	875.30.16	595				8.12	
	SG 1000 XLG 680	875.30.17	680				8.16	
Double positrack	SGDP 1000 XLG 170	875.59.11	170	4 to 65	4 to 65	19000	7.34	30
	SGDP 1000 XLG 255	875.59.12	255				7.70	
	SGDP 1000 XLG 340	875.59.13	340				7.88	
	SGDP 1000 XLG 425	875.59.14	425				7.99	
	SGDP 1000 XLG 510	875.59.15	510				8.06	
	SGDP 1000 XLG 595	875.59.16	595				8.12	
	SGDP 1000 XLG 680	875.59.17	680				8.16	
WHT-Polypropylene with PBT Pins								
Standard	SG 1000 WHT 255	875.25.12	255	4 to 104	4 to 104	11000	5.33	30
	SG 1000 WHT 340	875.25.13	340				5.50	
	SG 1000 WHT 425	875.25.14	425				5.60	
	SG 1000 WHT 510	875.25.15	510				5.66	
	SG 1000 WHT 595	875.25.16	595				5.71	
	SG 1000 WHT 680	875.25.17	680				5.75	

Special widths begin at 85 mm with 5 mm increments. Wider belts are available upon request.

Standard 100% rubber; other percentages can be supplied upon request.

Rubber top is a black elastomere, with a hardness of 40 (XP) or 50 (XLG) or 60 (WHT material has a white elastomere Rubber top) shore A.

Split Sprockets Wide Hub



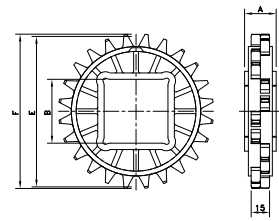
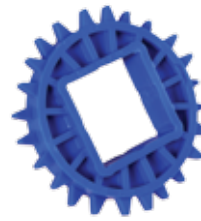
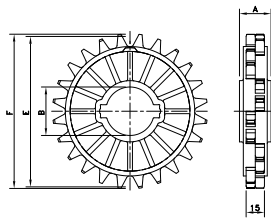
Sprocket Type	Code Number	Number of Teeth	Bore	Pitch Diameter	Outside Diameter	Hub Width
			B	E	F	A
			mm/inch	mm	mm	mm
Round Bores						
SSW 1000 16-30	899.06.17	16	30 mm	130.2	130.6	39
SSW 1000 16-35	899.06.10	16	35 mm			
SSW 1000 16-40	899.06.11	16	40 mm			
SSW 1000 18-30	899.08.17	18	30 mm	146.3	146.8	
SSW 1000 18-35	899.08.10	18	35 mm			
SSW 1000 18-40	899.08.11	18	40 mm			
SSW 1000 20-30	899.09.17	20	30 mm	162.4	163.1	
SSW 1000 20-35	899.09.10	20	35 mm			
SSW 1000 20-40	899.09.11	20	40 mm			
SSW 1000 16-1½	899.06.31	16	1.5"	130.2	130.6	
SSW 1000 18-1½	899.08.31	18	1.5"	146.3	146.8	
SSW 1000 20-1½	899.09.31	20	1.5"	162.4	163.1	
Square Bores						
SSW 1000 16-40x40	899.06.21	16	40 mm	130.2	130.6	39
SSW 1000 18-40x40	899.08.21	18	40 mm	146.3	146.8	
SSW 1000 20-40x40	899.09.21	20	40 mm	162.4	163.1	
SSW 1000 16-1½x1½	899.06.41	16	1.5"	130.2	130.6	
SSW 1000 18-1½x1½	899.08.41	18	1.5"	146.3	146.8	
SSW 1000 20-1½x1½	899.09.41	20	1.5"	162.4	163.1	

For wide hub sprockets with round bore one keyway is sufficient.

For humid, hot applications like pasteurizing, special sprockets are available; see next page.

Classic Sprockets

Classic Sprockets for Humid, Hot Applications like Pasteurizing



Sprocket Type	Code Number	Number of Teeth	Bore	Pitch Diameter	Outside Diameter	Hub Width		
			B	E	F	A		
mm/inch								
Round Bores								
CS 1000 12-30	895.02.17	12	30 mm	98.1	96.5	20		
CS 1000 12-40	895.02.11	12	40 mm					
CS 1000 12-50	895.02.12	12	50 mm					
CS 1000 18-30	895.08.17	18	30 mm	146.3	145.9			
CS 1000 18-35	895.08.10	18	35 mm					
CS 1000 18-40	895.08.11	18	40 mm					
CS 1000 18-45	895.08.15	18	45 mm					
CS 1000 18-50	895.08.12	18	50 mm					
CS 1000 18-65	895.08.13	18	65 mm	162.4	161.7	30		
CS 1000 20-35	895.09.10	20	35 mm					
CS 1000 20-40	895.09.11	20	40 mm					
CS 1000 20-50	895.09.12	20	50 mm	98.1	96.5	20		
CS 1000 12-1	895.02.46	12	1.0"					
CS 1000 18-1	895.08.46	18	1.0"					
CS 1000 18-1½	895.08.41	18	1.5"				146.3	145.9
CS 1000 18-2	895.08.42	18	2.0"					
CS 1000 20-1	895.09.46	20	1.0"				162.4	161.7
CS 1000 20-1½	895.09.41	20	1.5"					
Square Bores								
CS 1000 18-40x40	895.08.21	18	40 mm	146.3	145.9	20		
CS 1000 18-60x60	895.08.28	18	60 mm					
CS 1000 18-65x65	895.08.23	18	65 mm					
CS 1000 20-40x40	895.09.21	20	40 mm	162.4	161.7	20		
CS 1000 20-60x60	895.09.28	20	60 mm					
CS 1000 20-65x65	895.09.23	20	65 mm					
CS 1000 12-1½x1½	895.02.51	12	1.5"	98.1	96.5	20		
CS 1000 18-1½x1½	895.08.51	18	1.5"	146.3	145.9			
CS 1000 20-1½x1½	895.09.51	20	1.5"	162.4	161.7			
Classic Sprockets for Humid, Hot Applications like Pasteurizing								
Square Bores								
CS 1000 12-40x40 POM	893.02.21	12	40 mm	98.1	96.5	20		
CS 1000 18-40x40 POM	893.08.21	18	40 mm	146.3	145.9	20		
CS 1000 18-60x60 POM	893.08.28	18	60 mm					
CS 1000 20-40x40 POM	893.09.21	20	40 mm	162.4	161.7	20		
CS 1000 20-60x60 POM	893.09.28	20	60 mm					