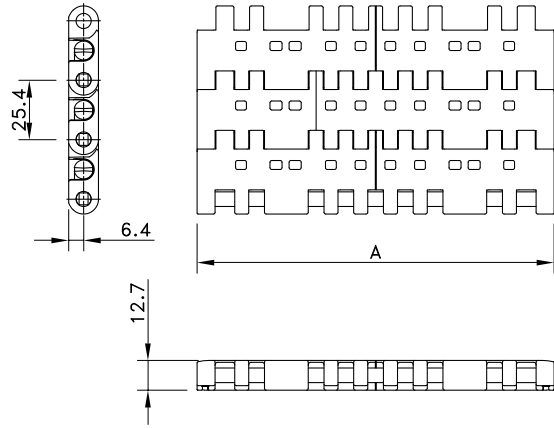
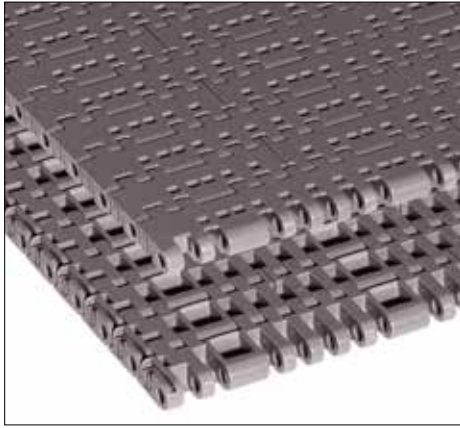


Perforated Top 7706



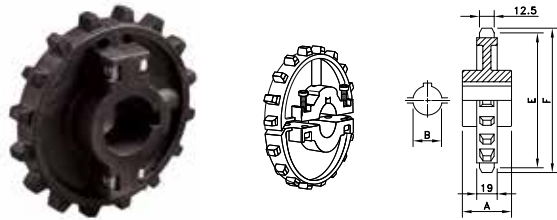
Assembly	Belt Type	Code Number*	Temperature range °C		Working Load (max.) N/m (21°C)	Weight kg/m ²	Backflex Radius (min.) mm
			Dry	Wet			
HP-Acetal with Polypropylene Pins							
Standard	HP 7706	I7706HPKxx	-40 to +80	-40 to +65	43000	13.18	25

* In code numbers xx corresponds with the belt width (A). Standard widths of these belts begin at 6" with 3" increments up to 120". Special widths start from 5" with 1/2" increments. See also page 208.

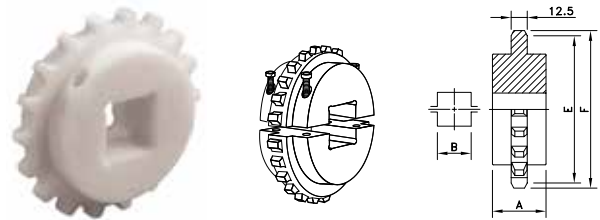
For DTS, modules from page 172 are used.

7706 belts can be supplied in metric versions upon request.

Split Sprockets Injection Moulded

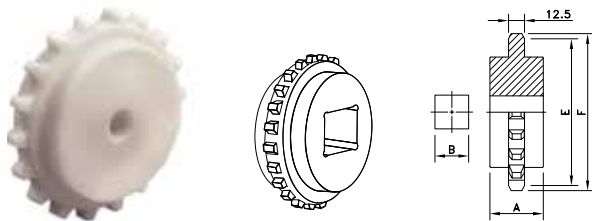


Split Sprockets Machined



Sprocket Type	Code Number	Number of Teeth	Bore	Pitch Diameter	Outside Diameter	Hub Width
			B mm/inch	E mm	F mm	A mm
Round Bores						
NS 7700 T16 R25	614-62-25	16	25	130.2	130.6	51
NS 7700 T16 R30	614-62-30	16	30			
NS 7700 T16 R35	614-62-35	16	35			
NS 7700 T16 R40	614-62-40	16	40			
NS 7700 T18 R25	614-60-25	18	25	146.3	146.9	
NS 7700 T18 R30	614-60-30	18	30			
NS 7700 T18 R35	614-60-35	18	35			
NS 7700 T18 R40	614-60-40	18	40			
NS 7700 T21 R25	614-63-25	21	25	170.4	170.7	
NS 7700 T21 R30	614-63-30	21	30			
NS 7700 T21 R35	614-63-35	21	35			
NS 7700 T21 R40	614-63-40	21	40			
Square Bores						
KUS 7700 T16 S40	614-370-4	16	40	130.2	130.6	51
KUS 7700 T18 S40	I7700604166	18	40	146.3	146.9	
KUS 7700 T18 S50	7700604176	18	50			
KUS 7700 T21 S40	614-383-4	21	40	170.3	170.7	
KUS 7700 T21 S50	614-383-6	21	50			
KUS 7700 T21 S60	614-383-8	21	60			

Classic Sprockets Machined



Sprocket Type	Code Number	Number of Teeth	Bore	Pitch Diameter	Outside Diameter	Hub Width
			B mm/inch	E mm	F mm	A mm
Square Bores						
KU 7700 T18 S50	114-3926-10	18	50	146.3	146.9	48
KU 7700 T18 S60	114-3926-12	18	60			
KU 7700 T21 S50	114-3925-12	21	50	170.3	170.7	
KU 7700 T21 S60	114-3925-14	21	60			
KU 7700 T21 S65	114-3925-15	21	65			
KU 7700 T25 S50	114-3927-13	25	50	202.7	204.2	

Round bores are available upon request.