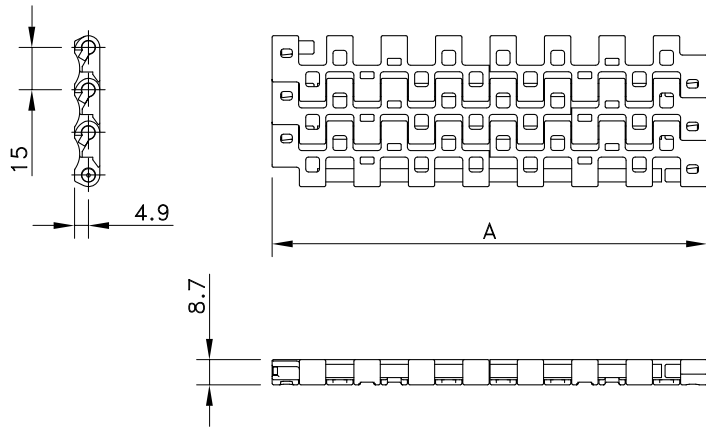
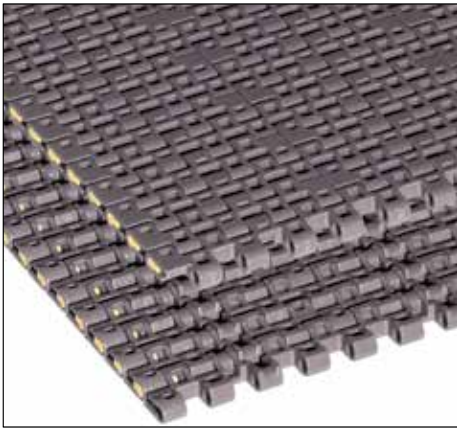


Flush Grid 1506 Imperial Sizes



Assembly	Belt Type	Code Number*	Temperature range °C		Working Load (max.) N/m (21°C)	Weight kg/m ²	Backflex Radius (min.) mm
			Dry	Wet			
HP-Acetal with PBT Pins							
Standard	HP 1506	I1506HPKxx	-40 to +80	-40 to +65	13200	6.24	25
DTS Left	HP 1505 DTS SX	81413971					
DTS Right	HP 1505 DTS DX	81414111					
HT-Polypropylene with PBT Pins							
Standard	HT 1506	I1506HTKxx	5 to 105	5 to 105	7300	4.52	25
BLT-Polyethylene with Polyethylene Pins							
Standard	BLT 1506	I1506BLTKxx	-70 to +35	-70 to +35	2800	4.80	25
WHT-Polypropylene with PBT Pins							
Standard	WHT 1506	I1506WHTKxx	4 to 80	4 to 65	7300	4.50	25
BHT-Polypropylene with PBT Pins							
Standard	BHT 1506	I1506BHTKxx	4 to 80	4 to 65	7300	4.50	25
SMB-Acetal with PBT Pins							
Standard	SMB 1506	I1506SMBKxx	-40 to +80	-40 to +65	13200	6.20	25

* In code numbers xx corresponds with the belt width (A). Standard nominal widths of these belts begin at 3" (76.2 mm), with 3" increments, or optionally 3/4" up to 120". NOTE: 3/4" is impossible. Example: I1506HPK06.75 is a 6.75" wide belt. See also page 208.

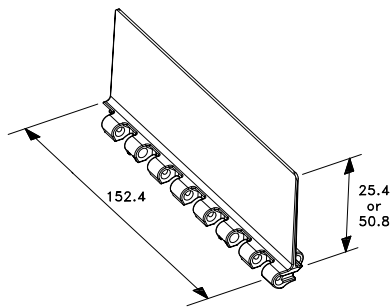
If you need flights or sideguards, describe the belt by choosing from the required options listed in the 2nd column of the table:

Material	BLT or WHT or BHT or SMB	
Belt type	1506	
Width (A)	K.. (in inches)	
Flights	F1 or F2 or H..	Standard height of 1" (25.4 mm), 2" (50.8 mm) or special height in mm
Pitch between flights	T..P	Flights on every .. th row
Flight side-indent	N.. (in inches)	Minimal 1 7/8" (48 mm) with 3/4" (19 mm) increments
Sideguards	SG2	Standard height of 2"

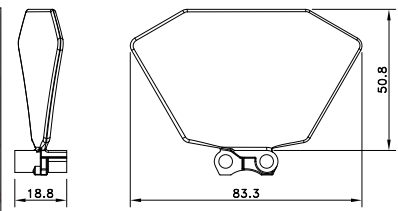
Example: WSM 1506 K-15 3/4 F1 T8P N1 5/8 SG2 is a 1506 Flush Grid belt, made of white acetal, width 15 3/4", 1" high flights on every 8th row at 1 5/8" from the sides and 2" high sideguards.



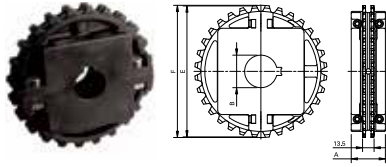
Flight for 1500-series imperial



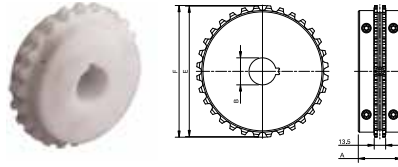
Sideguards for 1500-series imperial



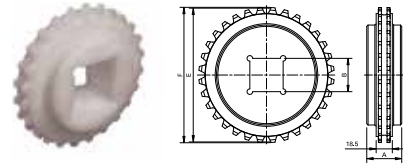
Split Sprockets 1505 Injection Moulded



Split Sprockets 1505 Machined



Classic Sprockets 1505 Machined



Sprocket Type	Code Number	Number of Teeth	Bore	Pitch Diameter	Outside Diameter	Hub Diameter
			B	E	F	A
			mm	mm	mm	mm

Split Sprockets 1505 Injection Moulded. Not suitable in combination with FTDP, SGDP and SGSDP due to the Positrack lugs.

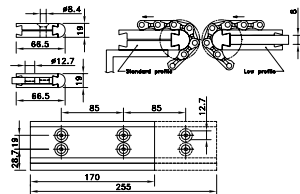
Round Bores						
NS 1500 T24 R25	614-213-7	24	25	114.9	115.5	40.0
NS 1500 T24 R30	614-213-1	24	30			
NS 1500 T24 R35	614-213-6	24	35			
NS 1500 T24 R40	614-213-4	24	40	153.4	154.8	
NS 1500 T32 R25	614-212-8	32	25			
NS 1500 T32 R30	614-212-1	32	30			
NS 1500 T32 R35	614-212-6	32	35			
NS 1500 T32 R40	614-212-2	32	40			

Square Bores						
NS 1500 T24 S40	614-142-2	24	40	114.9	115.5	40.0
NS 1500 T24 S60	614-142-1	24	60			
NS 1500 T32 S40	614-211-1	32	40	153.4	154.8	
NS 1500 T32 S60	614-211-2	32	60			

Split Sprockets 1505 Machined						
Round Bores						
KUS 1500 T24 R25	614-284-5	24	25	114.9	115.5	50.8
KUS 1500 T24 R30	614-284-1	24	30			
KUS 1500 T24 R35	614-284-6	24	35			
KUS 1500 T24 R40	614-284-2	24	40			

Classic Sprockets 1505 Machined						
Round Bores						
KU 1500 T12 R30	114-3625-22	12	30	58.1	58.2	24.1
KU 1500 T16 R30	114-3756-28	16	30	77.1	77.7	31.8
KU 1500 T24 R30	114-2727-7	24	30	114.9	115.5	40.0
KU 1500 T24 R40	114-2727-8	24	40			
KU 1500 T32 R30	114-2812-6	32	30	153.4	154.8	40.0
KU 1500 T32 R40	114-2812-12	32	40			
Square Bores						
KU 1500 T24 S25	114-4518-4	24	25	114.9	115.5	40.0
KU 1500 T32 S40	114-2813-10	32	40	153.4	154.8	40.0

Nose-Over Bars



Part Number	Width	Hole Spacing	Plate Size	Inserts
Standard Version				
905-655711	6"	3"	-	-
Low Version				
905-656301	170 mm	85 mm	8 mm	M6
905-656291	255 mm	85 mm	8 mm	M6
905-655721	6"	3"	8 mm	M6
905-655731	6"	3"	¼"	¼-20

Other versions can be supplied upon request.