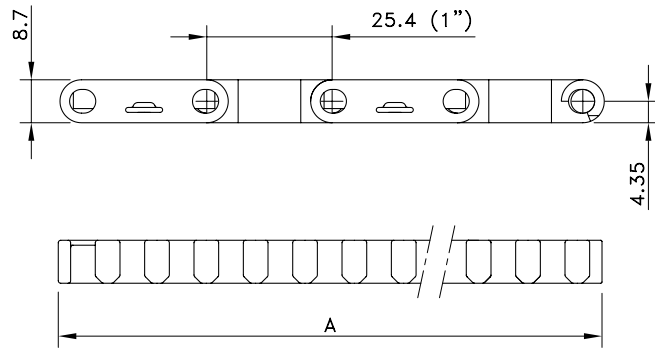
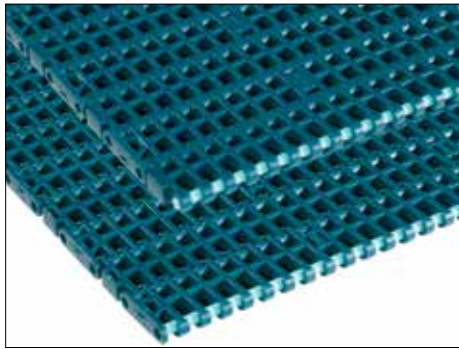


# Flush Grid 1000

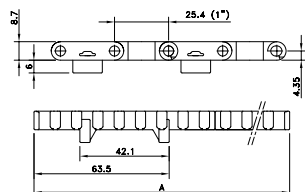


Assembly	Belt Type	Code Number*	Temperature range °C		Working Load (max.) N/m (21°C)	Weight kg/m <sup>2</sup>	Backflex Radius (min.) mm
			Dry	Wet			
<b>XLG-Acetal with Polypropylene Pins (84 has PBT pins)</b>							
Standard	FG 1000 XLG	817.40.xx	4 to 80	4 to 65	22000	5.40	25
Double Positrack	FGDP 1000 XLG	874.43.xx					
Positrack 1 side, freeflow 1 side	FFGP 1000 XLG 1xP	874.08.xx					
Positrack 2 sides, freeflow 1 side	FFGP 1000 XLG 2xP	874.07.xx					
Double positrack 84	FGDP 1000 XLG 84	874.30.09	-30 to +80	up to 65			
<b>PSX Advanced Performance Polymer Alloy with PBT pins</b>							
Standard	FG 1000 PSX	874.63.xx	4 to 80	4 to 65	22000	5.40	25
Double Positrack	FGDP 1000 PSX	874.64.xx					
Positrack 1 side, freeflow 1 side	FFGP 1000 PSX 1xP	874.68.xx					
Positrack 2 sides, freeflow 1 side	FFGP 1000 PSX 2xP	874.69.xx					
Double positrack 84	FGDP 1000 PSX 84	874.64.09	-30 to +80	up to 65			
<b>XP-Polypropylene with Polypropylene Pins</b>							
Standard	FG 1000 XP	818.40.xx	4 to 104	4 to 104	11000	3.53	25
Double positrack	FGDP 1000 XP	874.45.xx					
<b>WLT-Polyethylene with Polyethylene Pins</b>							
Standard	WLT 1000 FG	812.70.xx	-70 to +35	-70 to +35	5000	3.70	25
<b>WHT-Polypropylene with Polypropylene Pins</b>							
Standard	WHT 1000 FG	811.90.xx	4 to 104	4 to 104	11000	3.50	25
<b>BHT-Polypropylene with Polypropylene Pins</b>							
Standard	BHT 1000 FG	810.08.xx	4 to 104	4 to 104	11000	3.50	25
<b>WSM-Acetal with Polypropylene Pins</b>							
Standard	WSM 1000 FG	815.80.xx	4 to 80	4 to 65	22000	5.40	25
Double positrack	WSM 1000 FGDP	874.44.xx					
<b>SMB-Acetal with Polypropylene Pins</b>							
Standard	SMB 1000 FG	810.07.xx	4 to 80	4 to 65	22000	5.40	25

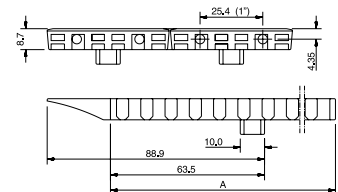
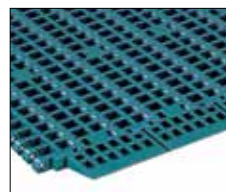
\* In code numbers xx corresponds with the belt width (A), starting with 10 for 85 mm, 11 for 170 mm and so on with 85 mm increments, or optionally 5 mm, up to 6120 mm; see also page 208.

If you need flights, describe the belt by choosing from the required options listed in the 2<sup>nd</sup> column of the table:

Material	<b>WLT or BLT or WHT or BHT or WSM or SMB</b>	
Belt type	<b>1000 FG or 1000 FGDP</b>	(Double) Positrack not possible for WLT, BLT, WHT, BHT and SMB
Width (A)	<b>KM-.. (in mm)</b>	Belts with flights have a minimal width of 130 mm with 10 mm increments
Flights	<b>F3 or F2 or F1 or H..</b>	Standard height of 3", 2", 1" or special height in mm
Pitch between flights	<b>T..P</b>	Flights on every .. <sup>th</sup> row (must correspond to an even number of rows)
Flight side-indent	<b>N.. (in mm)</b>	Minimal 40 mm with 5 mm increments

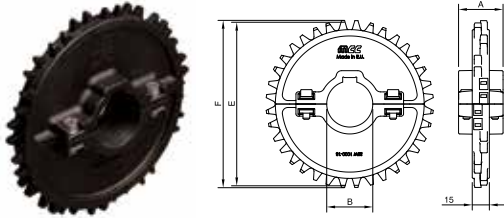


Positrack



Freeflow 1000-series

## Split Sprockets Wide Hub

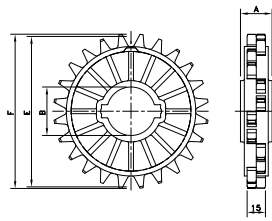


Sprocket Type	Code Number	Number of Teeth	Bore	Pitch Diameter	Outside Diameter	Hub Width
			B	E	F	A
			mm/inch	mm	mm	mm
<b>Round Bores</b>						
SSW 1000 16-30	899.06.17	16	30 mm	130.2	130.6	39
SSW 1000 16-35	899.06.10	16	35 mm			
SSW 1000 16-40	899.06.11	16	40 mm			
SSW 1000 18-30	899.08.17	18	30 mm	146.3	146.8	
SSW 1000 18-35	899.08.10	18	35 mm			
SSW 1000 18-40	899.08.11	18	40 mm			
SSW 1000 20-30	899.09.17	20	30 mm	162.4	163.1	
SSW 1000 20-35	899.09.10	20	35 mm			
SSW 1000 20-40	899.09.11	20	40 mm			
SSW 1000 16-1½	899.06.31	16	1.5"	130.2	130.6	
SSW 1000 18-1½	899.08.31	18	1.5"	146.3	146.8	
SSW 1000 20-1½	899.09.31	20	1.5"	162.4	163.1	
<b>Square Bores</b>						
SSW 1000 16-40x40	899.06.21	16	40 mm	130.2	130.6	39
SSW 1000 18-40x40	899.08.21	18	40 mm	146.3	146.8	
SSW 1000 20-40x40	899.09.21	20	40 mm	162.4	163.1	
SSW 1000 16-1½x1½	899.06.41	16	1.5"	130.2	130.6	
SSW 1000 18-1½x1½	899.08.41	18	1.5"	146.3	146.8	
SSW 1000 20-1½x1½	899.09.41	20	1.5"	162.4	163.1	

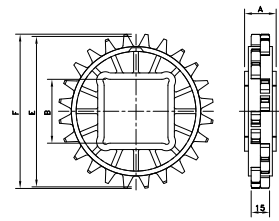
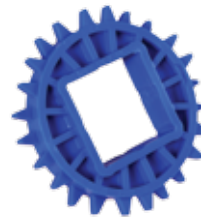
For wide hub sprockets with round bore one keyway is sufficient.

For humid, hot applications like pasteurizing, special sprockets are available; see next page.

## Classic Sprockets



## Classic Sprockets for Humid, Hot Applications like Pasteurizing



Sprocket Type	Code Number	Number of Teeth	Bore	Pitch Diameter	Outside Diameter	Hub Width
			B	E	F	A
			mm/inch	mm	mm	mm
<b>Round Bores</b>						
CS 1000 12-30	895.02.17	12	30 mm	98.1	96.5	20
CS 1000 12-40	895.02.11	12	40 mm			
CS 1000 12-50	895.02.12	12	50 mm			
CS 1000 18-30	895.08.17	18	30 mm	146.3	145.9	
CS 1000 18-35	895.08.10	18	35 mm			
CS 1000 18-40	895.08.11	18	40 mm			
CS 1000 18-45	895.08.15	18	45 mm			
CS 1000 18-50	895.08.12	18	50 mm			
CS 1000 18-65	895.08.13	18	65 mm	162.4	161.7	30
CS 1000 20-35	895.09.10	20	35 mm			
CS 1000 20-40	895.09.11	20	40 mm			
CS 1000 20-50	895.09.12	20	50 mm	146.3	145.9	20
CS 1000 12-1	895.02.46	12	1.0"			
CS 1000 18-1	895.08.46	18	1.0"			
CS 1000 18-1½	895.08.41	18	1.5"			
CS 1000 18-2	895.08.42	18	2.0"			
CS 1000 20-1	895.09.46	20	1.0"			
CS 1000 20-1½	895.09.41	20	1.5"	162.4	161.7	
<b>Square Bores</b>						
CS 1000 18-40x40	895.08.21	18	40 mm	146.3	145.9	20
CS 1000 18-60x60	895.08.28	18	60 mm			
CS 1000 18-65x65	895.08.23	18	65 mm			
CS 1000 20-40x40	895.09.21	20	40 mm	162.4	161.7	20
CS 1000 20-60x60	895.09.28	20	60 mm			
CS 1000 20-65x65	895.09.23	20	65 mm			
CS 1000 12-1½x1½	895.02.51	12	1.5"	98.1	96.5	20
CS 1000 18-1½x1½	895.08.51	18	1.5"	146.3	145.9	
CS 1000 20-1½x1½	895.09.51	20	1.5"	162.4	161.7	
<b>Classic Sprockets for Humid, Hot Applications like Pasteurizing</b>						
<b>Square Bores</b>						
CS 1000 12-40x40 POM	893.02.21	12	40 mm	98.1	96.5	20
CS 1000 18-40x40 POM	893.08.21	18	40 mm	146.3	145.9	20
CS 1000 18-60x60 POM	893.08.28	18	60 mm			
CS 1000 20-40x40 POM	893.09.21	20	40 mm	162.4	161.7	20
CS 1000 20-60x60 POM	893.09.28	20	60 mm			