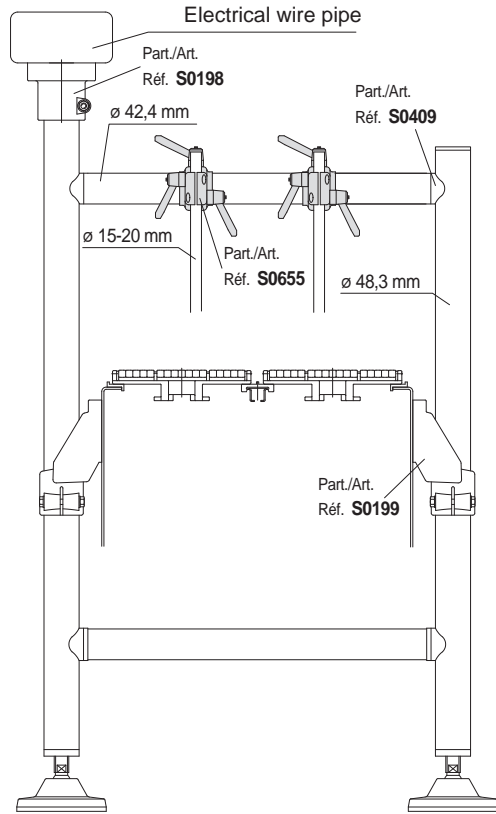


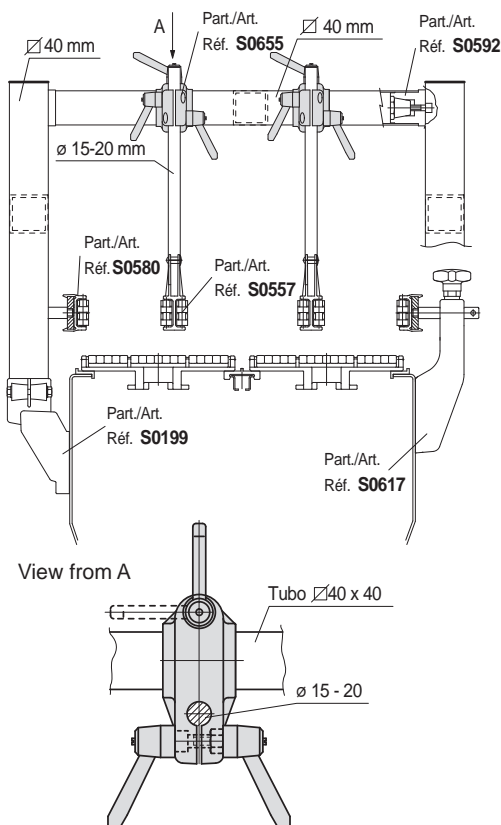
Characteristics of Part. S0655

Easy and quick adjustment of guides supported by bridge structure.

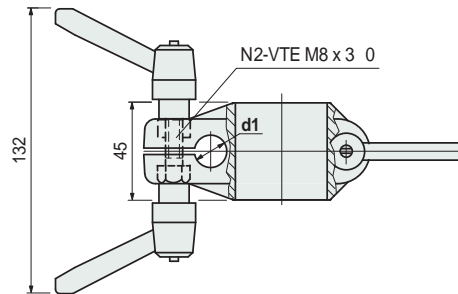
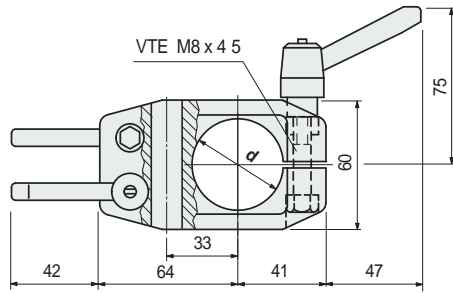
Use of Part. S0655 (for round tubes)



Use of Part. SS0655 (for square tubes)



Cross clamp with ratchet handle clamping



Tube dia. d mm	Rod dia. d1 mm	Code	Weight kg
42,4 (1" 1/4)	15	655422	0,28
	20	655182	

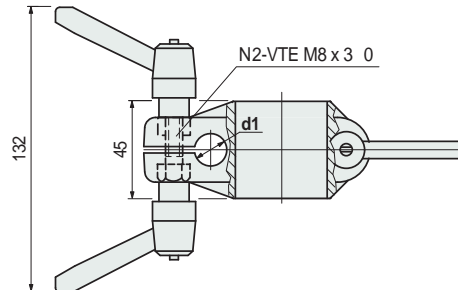
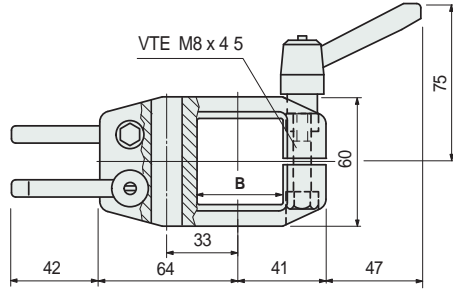
- Material clamp: body in reinforced polyamide PA FV (black), tightening screws in austenitic stainless steel.
- Material handles: body in reinforce polyamide PA FV (black), threaded insert in nickel plated brass.
- Max recommended tightening torque: 1,5 Kgm.
- Packaging: 25 pieces.

Part. S0655



Round bore

Cross clamp with ratchet handle clamping



Square tube B mm	Rod dia. d1 mm	Code	Weight kg
40 x 40	15	655432	0,28
	20	655442	

- Material clamp: body in reinforced polyamide PA FV (black), tightening screws in austenitic stainless steel.
- Material handles: body in reinforced polyamide PA FV (black), threaded insert in nickel plated brass.
- Max recommended tightening torque: 1,5 Kgm.
- Packaging: 25 pieces.

Part. S0655



Square bore

● Best Seller

● Standard

● On request: minimum quantity may apply. Consult our Customer Service for availability.

Item code for order = Part. + Code